

Milano

Boiling Water Tap

Installation Guide

Contents

Safety Information **Page - 2**

Installation **Page - 2**

Warranty Information **Page - 5**

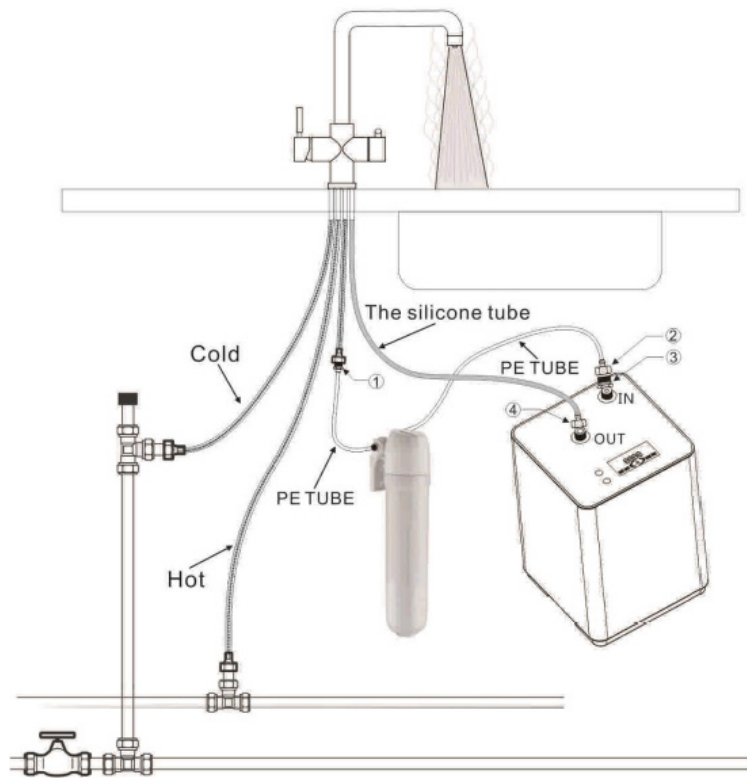
Recycling & Disposal **Page - 5**

Safety Information

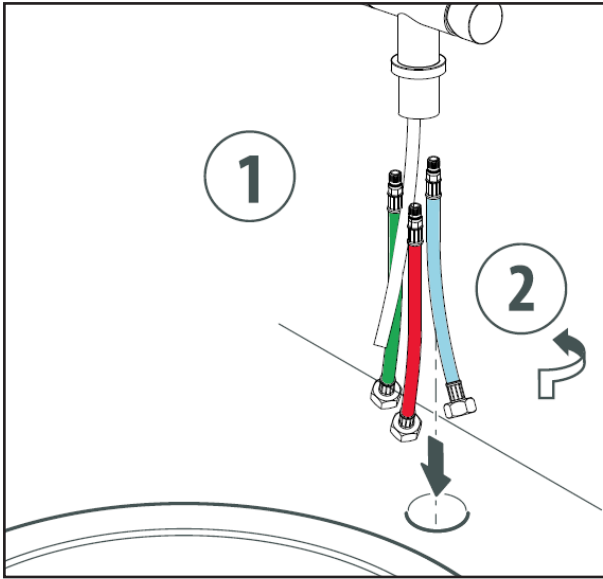
Please read carefully...

- ✓ Check the product for defects before installing.
- ✓ This product should be installed by a qualified plumber or installer.
- ✓ For Information on installing the hot water boiler, please refer to the guide provided with it.
- ✓ This product delivers Hot water at high temperatures, please exercise caution during use.

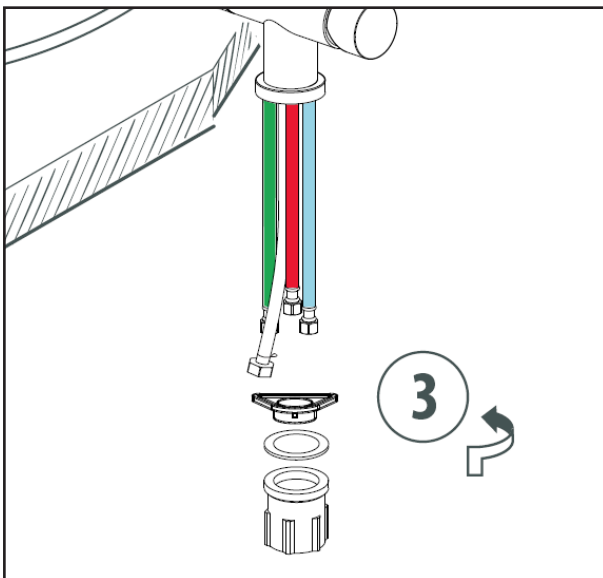
Installation



No.	Description	Usage	Picture	Packed in
1	G ½" male & PE tube adaptor	Connect with G ½" Female hose from tap		Filter Box
2	G ½" (Female) & PE tube adaptor	Connect to Connection No. 3		Filter Box
3	G 3/8" Female & G ½" male adaptor	Connect to "IN" on boiler		Boiler Box
4	G 3/8" female & quick connection adaptor	Connect to "OUT" on boiler and attach silicone tube		Boiler Box

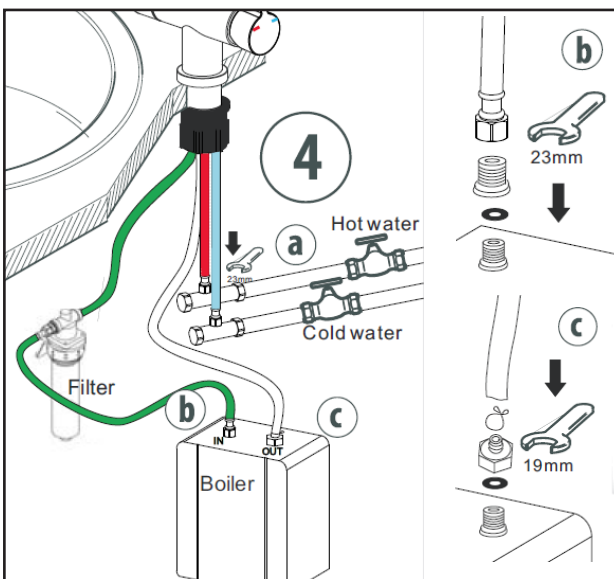


1. Unscrew the fixing nut off the tap.
2. Install the hoses onto the tap by screwing them in anti clockwise .



3. Insert the hoses through the tap hole, for ease of installation insert in the following order -

1. HOT / COLD hose (Red/Blue).
2. Boiled in hose (Green).
3. Silicone tube.



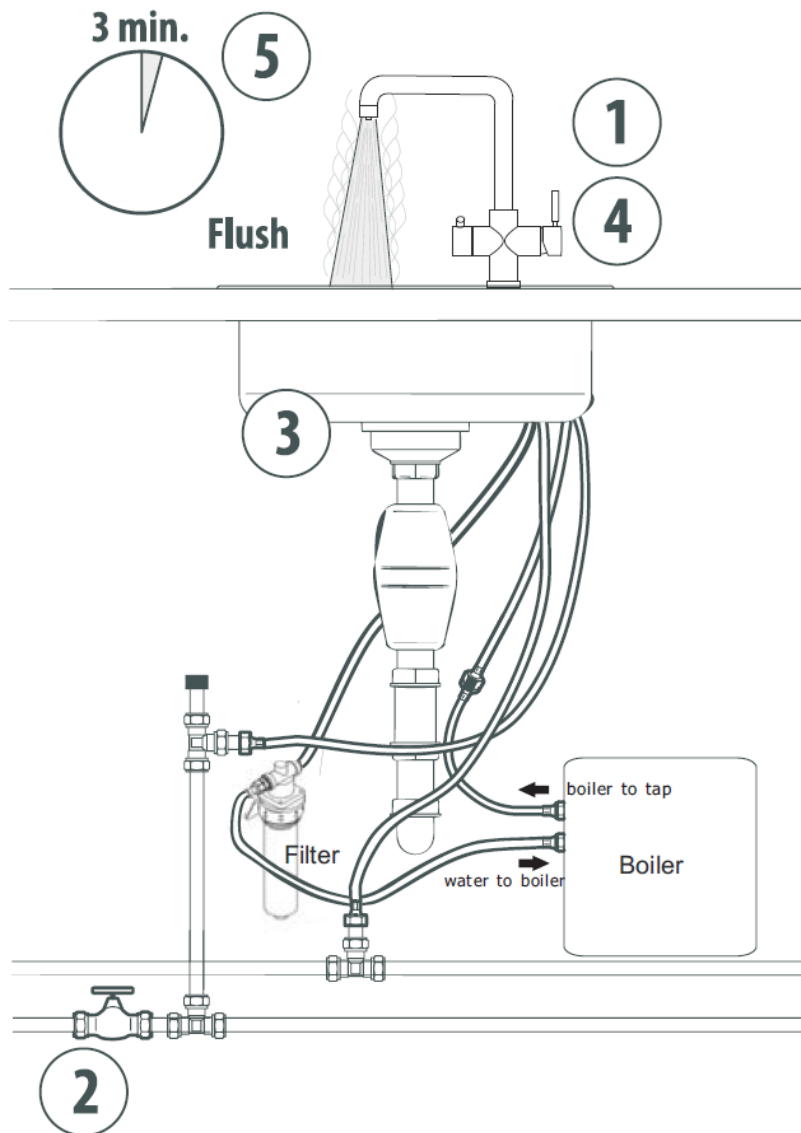
4. Slide the Gasket and retaining ring onto the threaded tube and tighten firmly.

Finally connect the boiled in hose to the filter and connect to the "IN" connection on the boiler.

Filling and venting the heating tank

1. Close the boiling water tap.
2. Open the mains valve.
3. Open the boiling water valve to fill in the tank until water flows out from the tap.
4. Wait until water flows from the tap.
5. Let the water flow for 3 minutes until clear water flows from the tap.
6. Check for leaks, rectify as necessary.

For ease of maintenance you can install a filter valve to either side of the water filter



Warranty Information

- *This product is covered by a 5 year guarantee.*
- *The guarantee starts from the date of purchase.*
- *The guarantee covers you against issues caused as a result of manufacturing related issues, it does not apply to issues that are found to be a result of poor installation.*
- *Labour costs for installation of the product are not covered under this warranty.*

Aftercare

Ensure that the product is covered in poor weather, to avoid frost damage to pipes, drain the unit off and close the water-feeds.

Clean with a soft dry cloth, do not use abrasive cleaners.

Recycling and Disposal

Please recycle / dispose of this product in accordance with your local council / government guidelines.

Contact Us

MILANO
Unit 1 & 2
Dawson Ct
Burnley
BB11 5UB