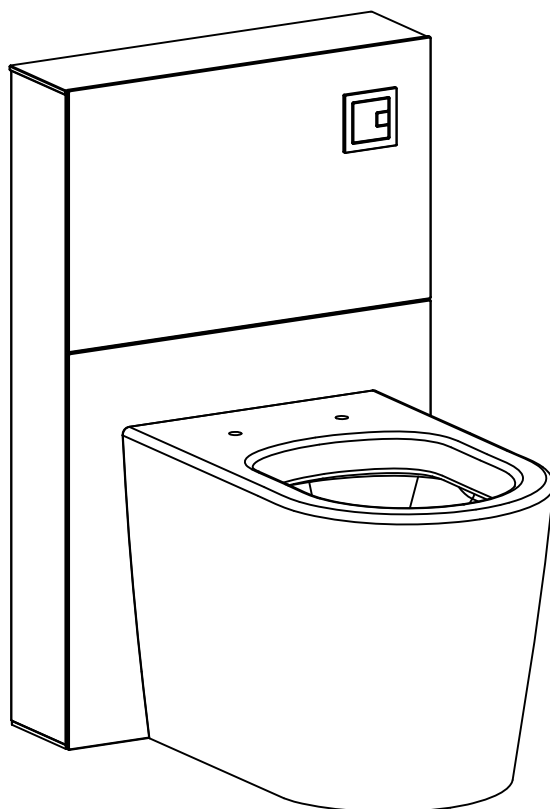


# Milano

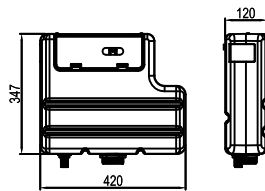
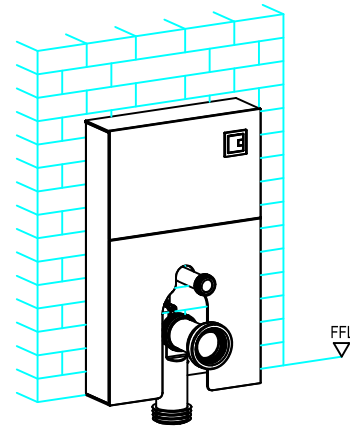
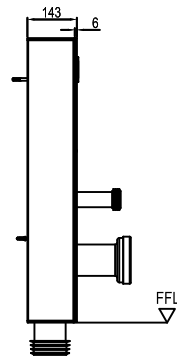
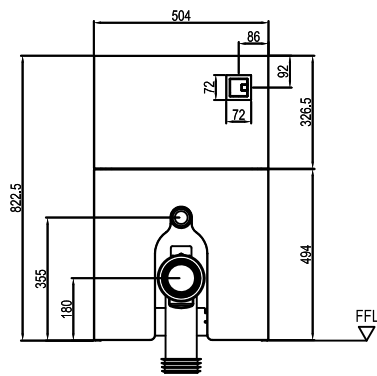
WC Cabinet



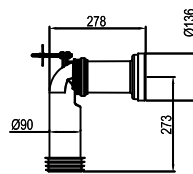
Installation Guide

## 1. Dimensions:

1

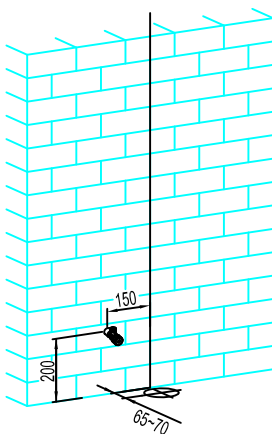


Material: HDPE  
Color: Natural

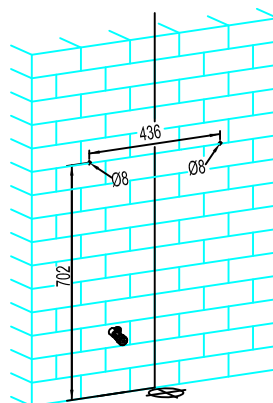


Material: HDPE  
Color: Black

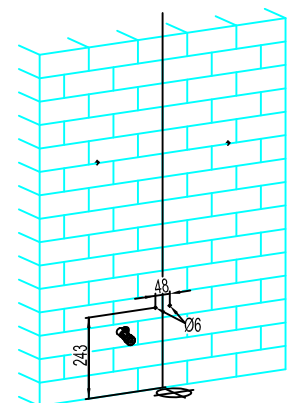
## 2. Drill holes on the wall



Picture 1



Picture 2

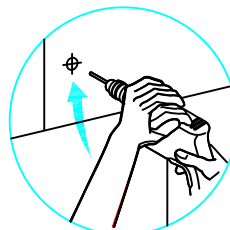


Picture 3

Picture 1: Positions for isolation valve on the wall and holes on floor.

Picture 2: Drill the cabinet installation holes on the wall

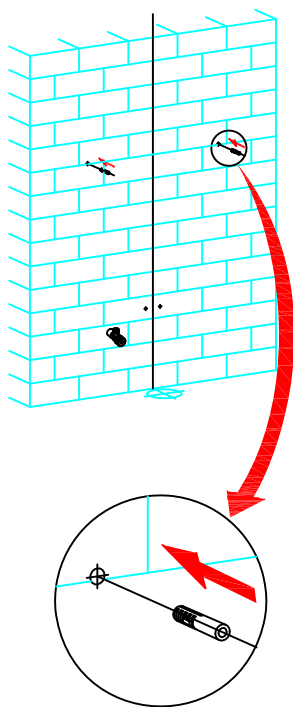
Picture 3: Drill the 90° waste pipe installation hole



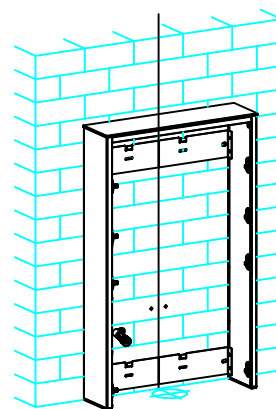
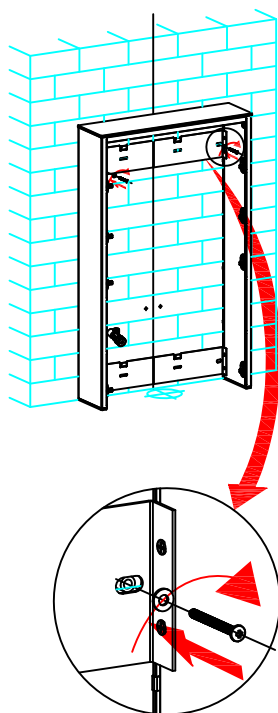
### 3. Installation of cabinet

2

a. Press the expansion plugs into the cabinet installation holes;

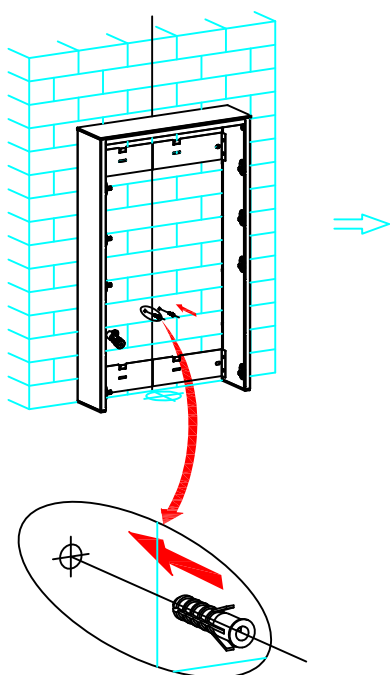


b. Fix the cabinet onto the wall by using the screws and washers.

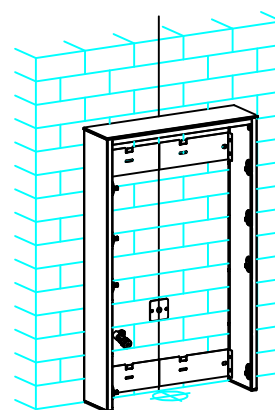
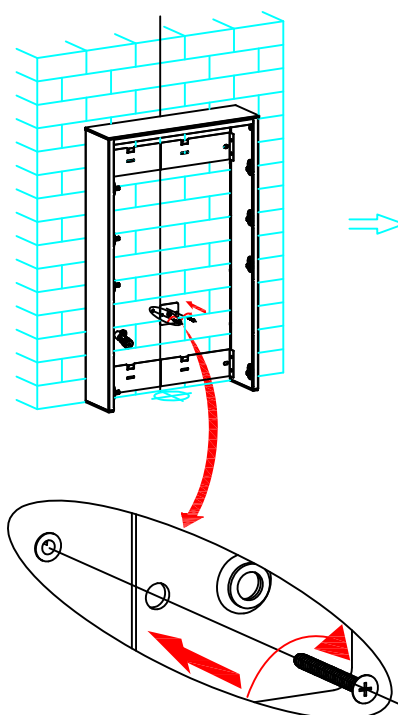


### 4. Installation of 90° waste pipe

a. Press the expansion plugs into the holes of the wall

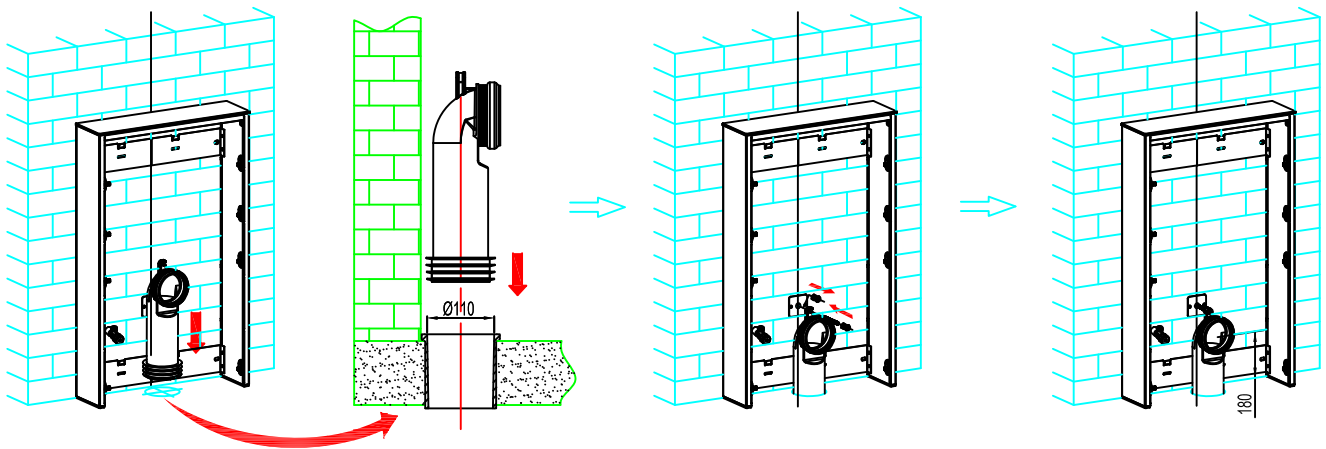


b. Fix the square washer onto the wall by using screws.

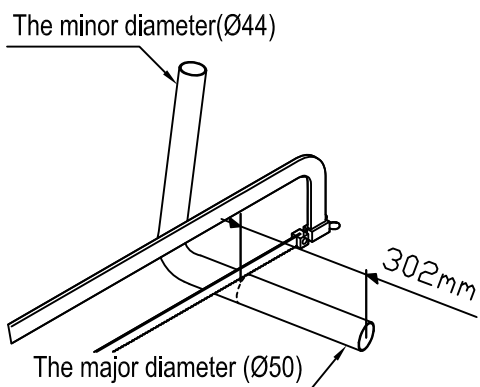


c. Insert the 90° waste pipe (including rubber gasket) into to hole on floor;

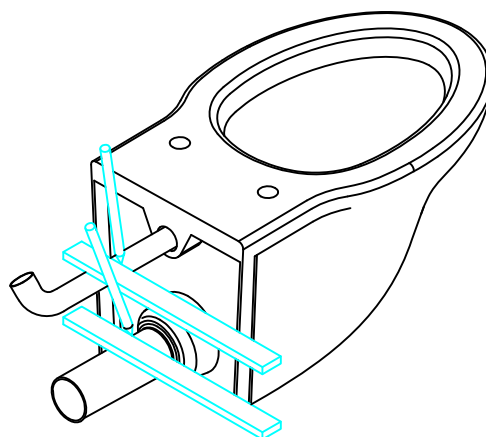
d. Use bolts and nuts to connect the 90° waste pipe to the square washer on the wall.



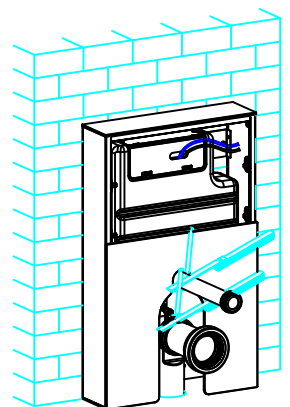
## 5. Cutting the flush bend and the waste pipe

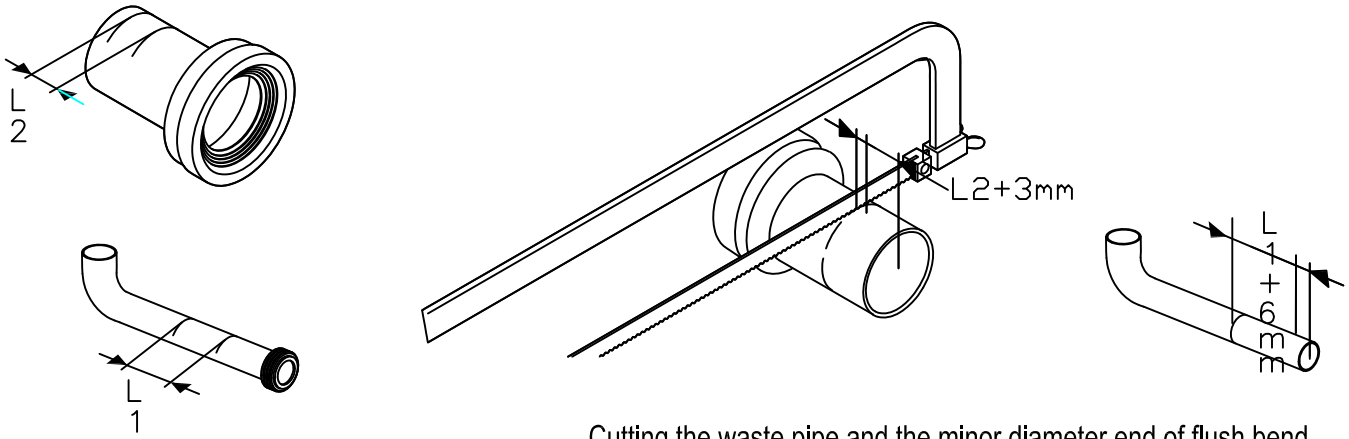


Cutting the major diameter end of flush bend

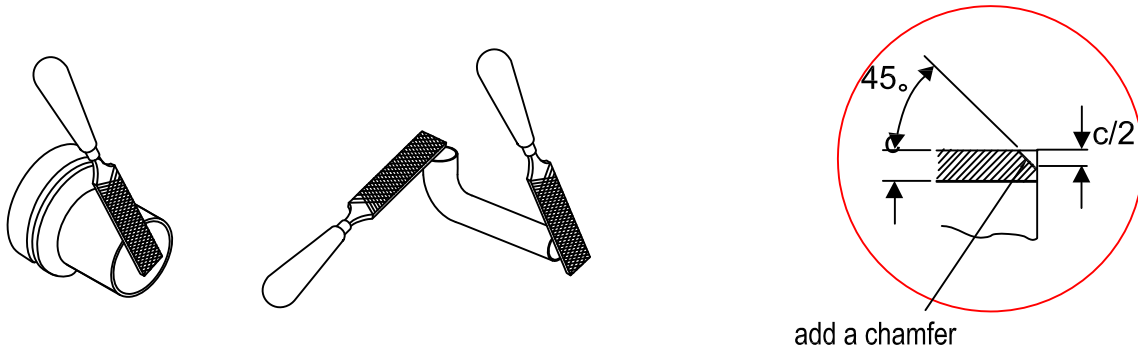


Pre-install the cabinet and bottom glass panel onto the wall, and place a mark on the flush bend and waste pipe.



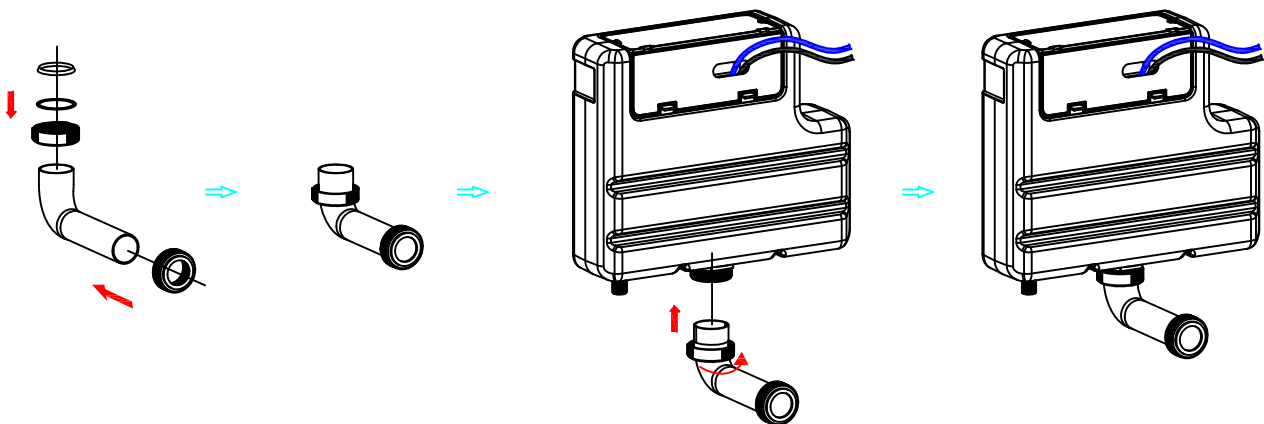


Cutting the waste pipe and the minor diameter end of flush bend .



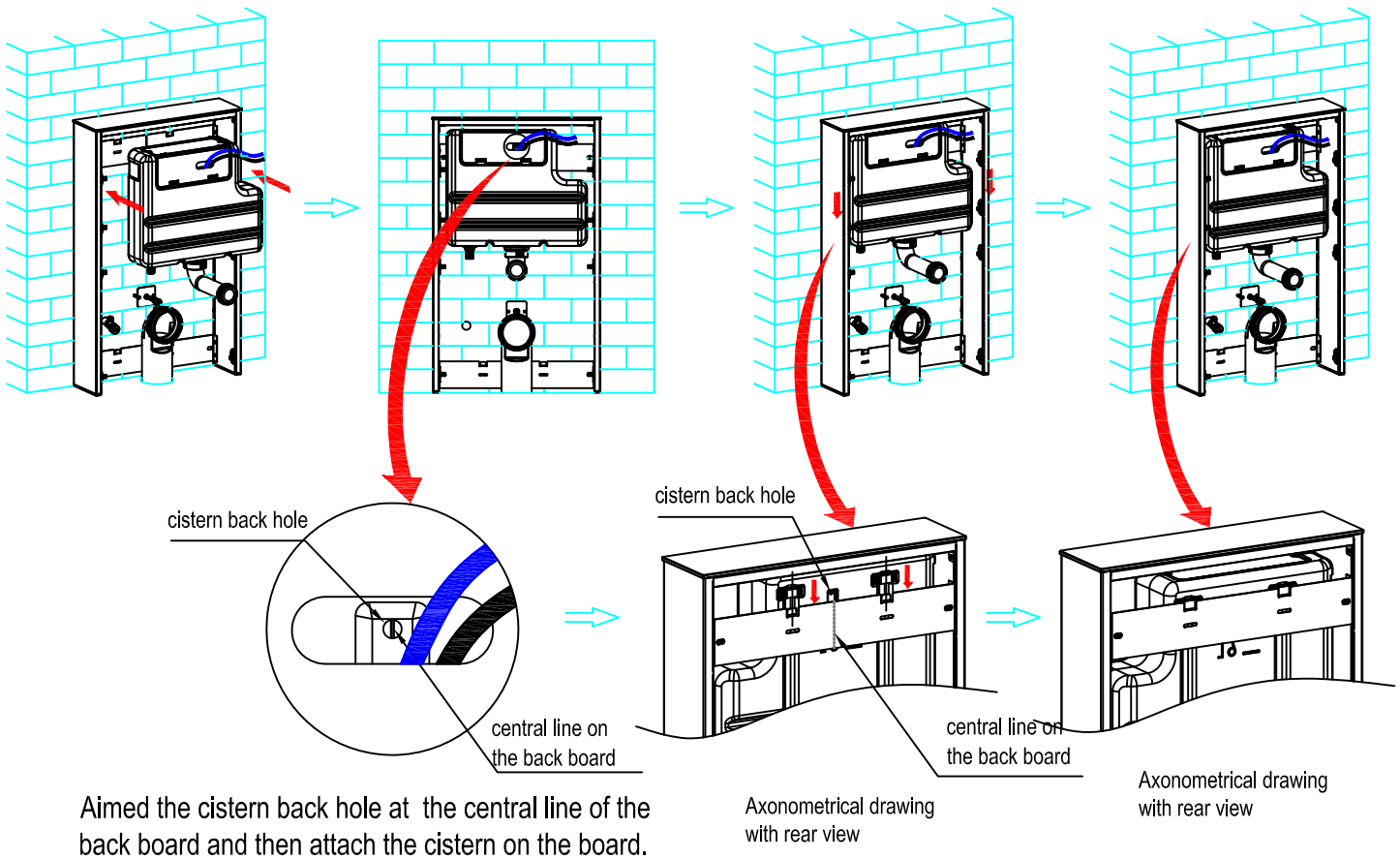
Once cut,add a chamfer to the end of flush bend and waste pipe

## 6.Installation of cistern body

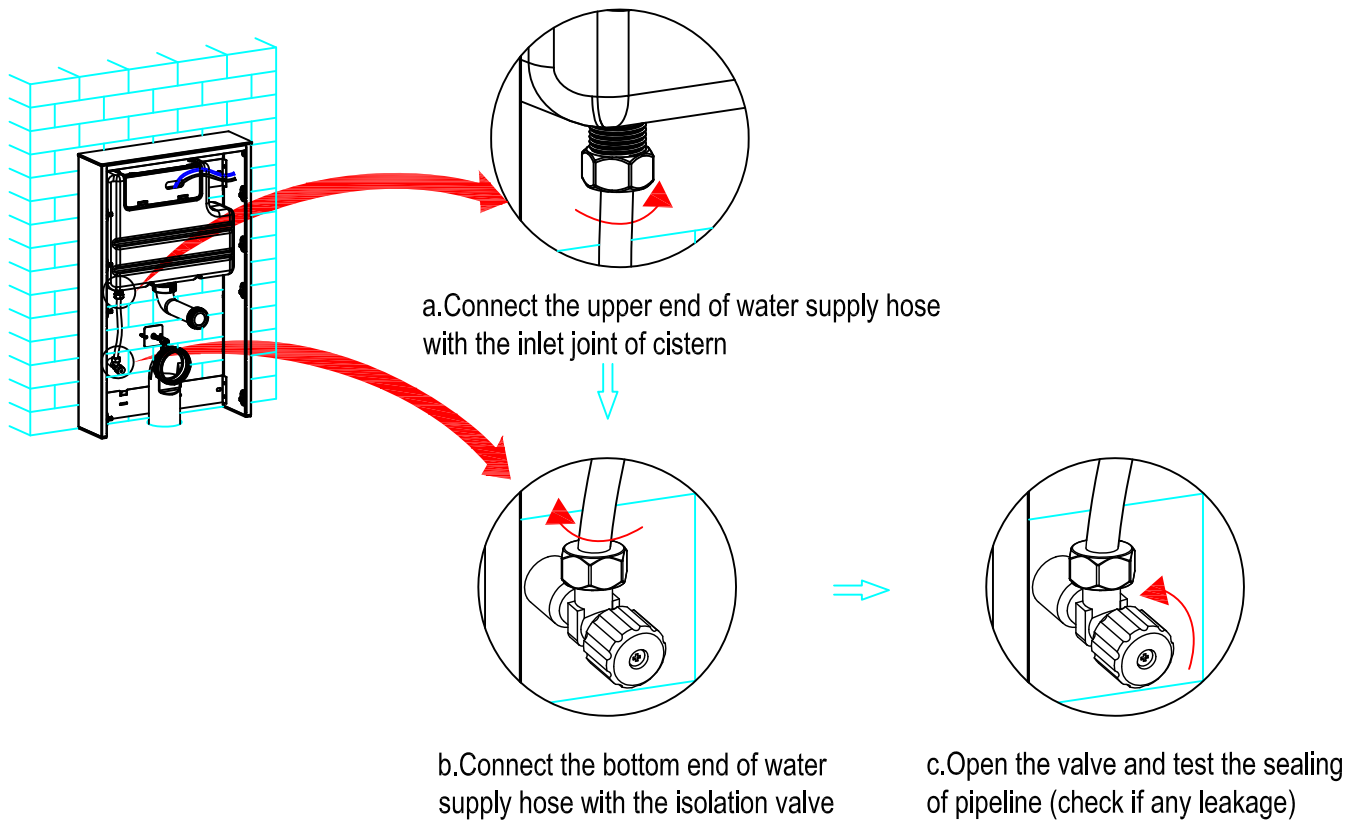


Install the seal cone ring, washer,screw nut and seal cap on the flush bend.

Fix the flush bend onto the cistern body through the screw nuts

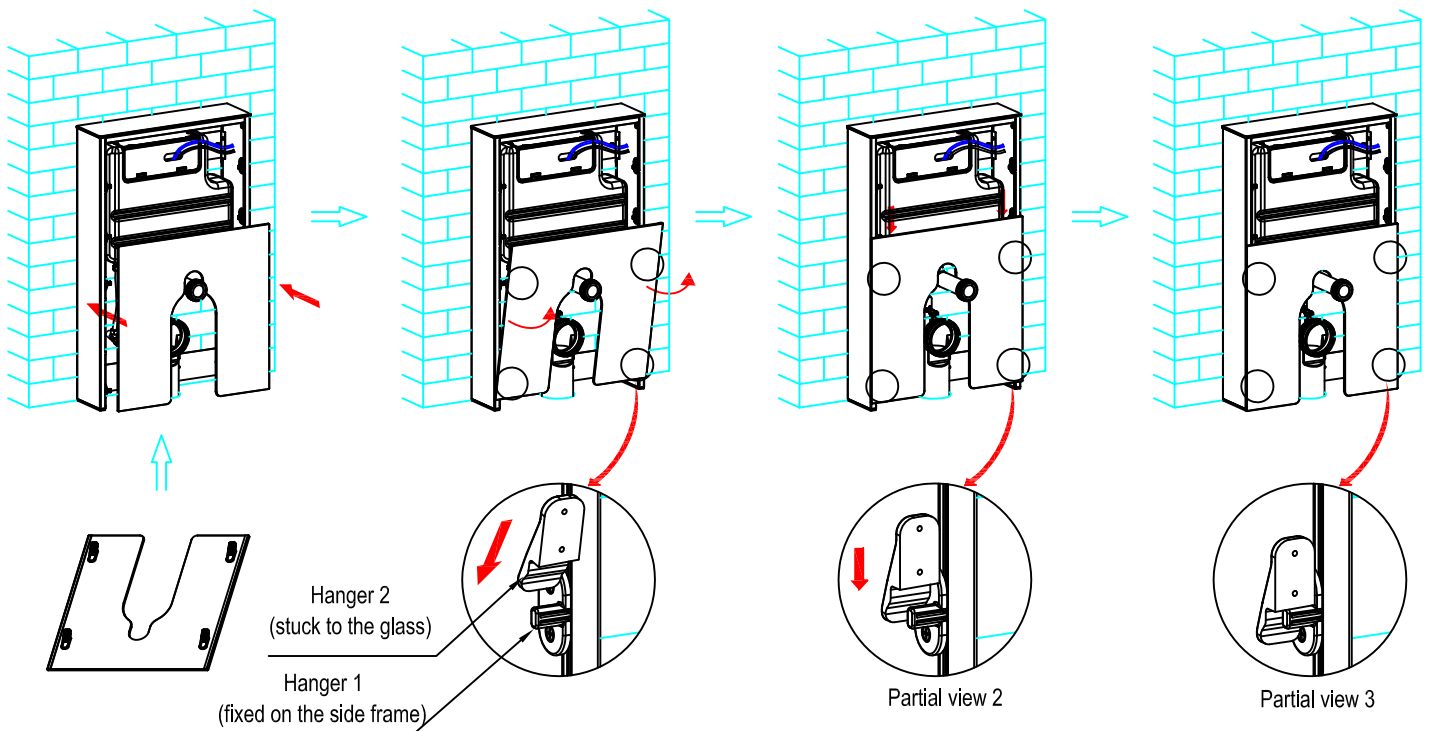


## 7. Installation of water supply hose



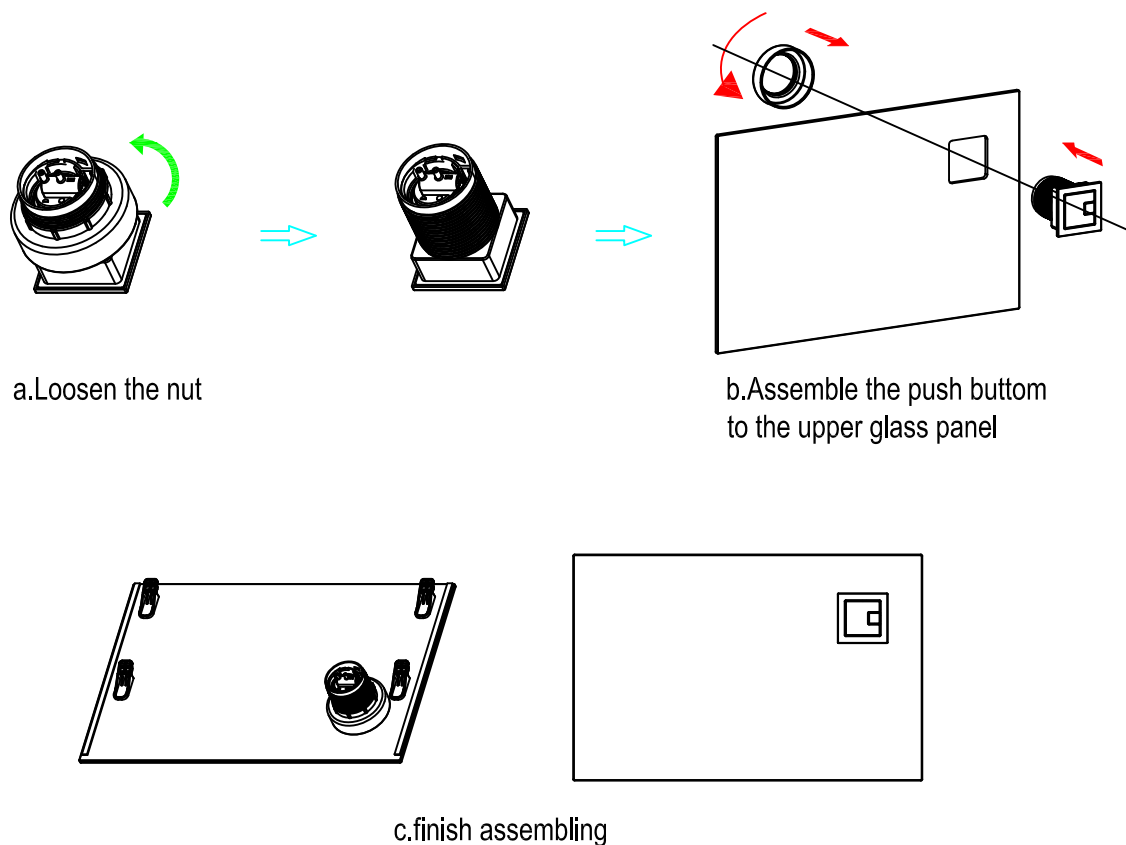
## 8.Installation of bottom glass panel

6



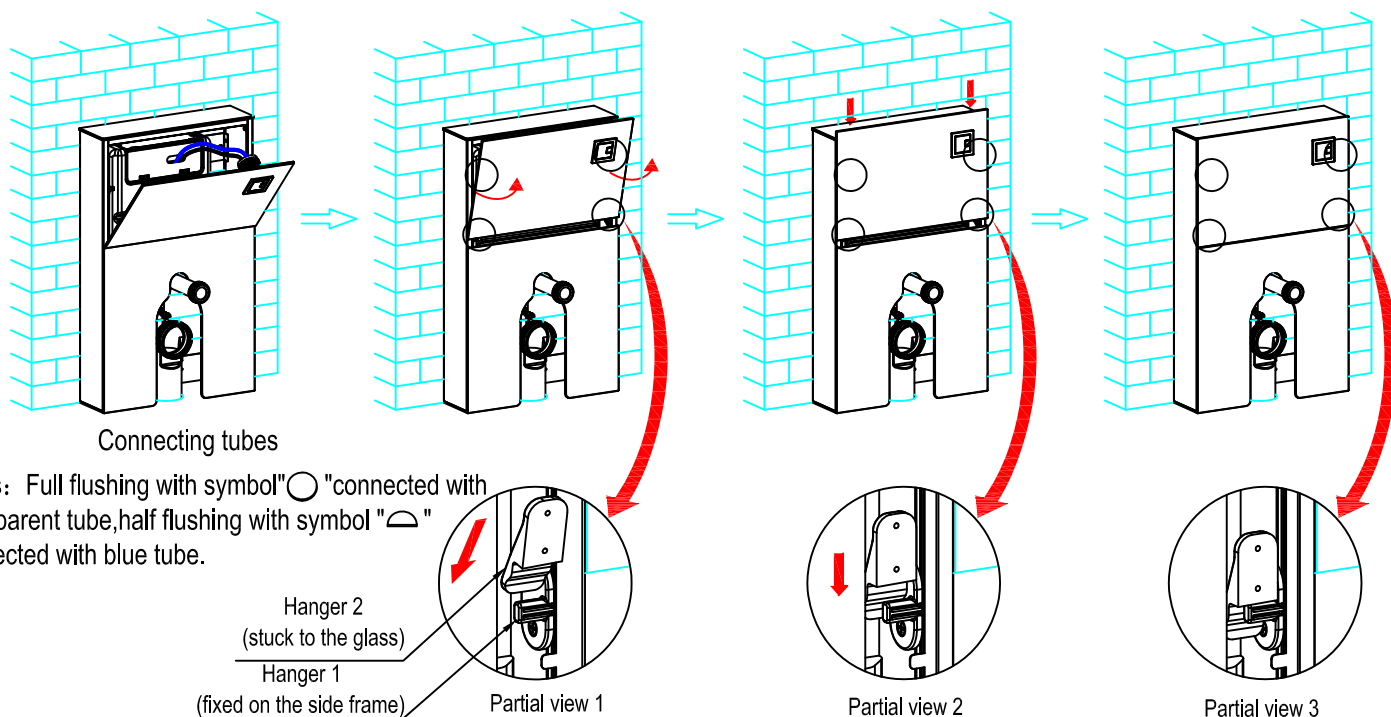
Notes: There are four pairs of hangers in total, and here, only select one pair to follow the installation instruction. It requires that four pairs of hangers should be under the status of Partial view 2 and glass ought to be stuck to the side frame completely before you let your hands go and press down the glass.

## 9.Installation of the push button



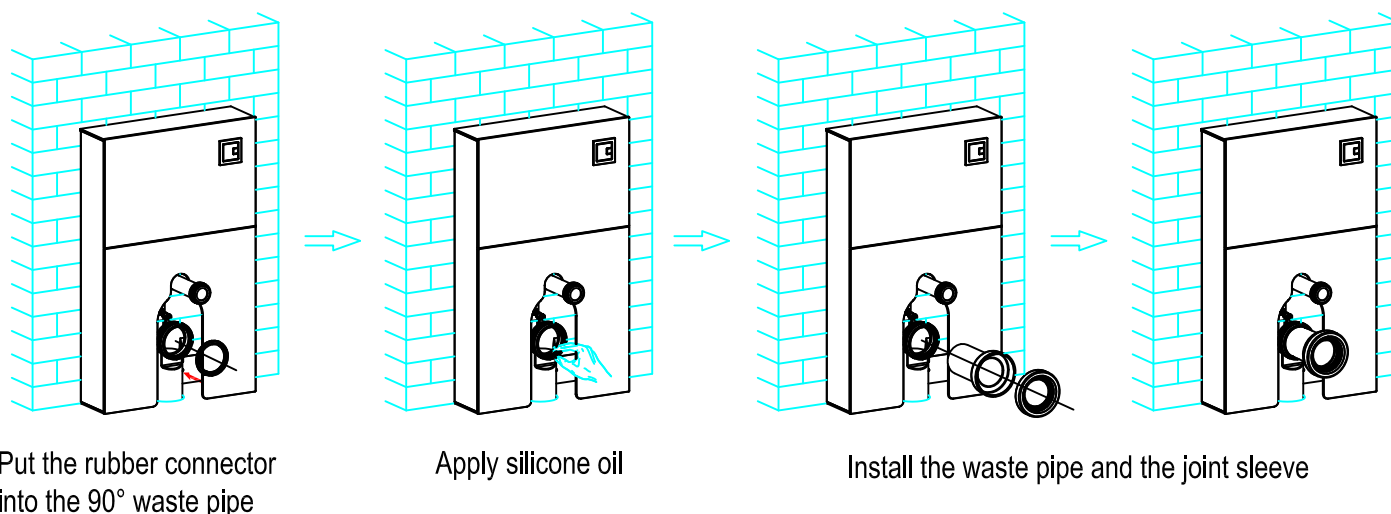
## 10. Installation of the upper glass panel

7

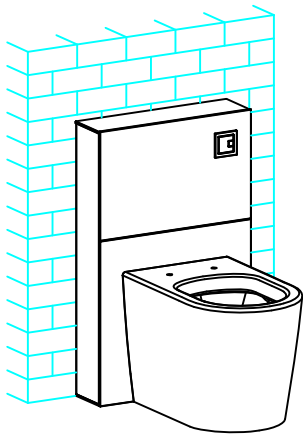


Notes: There are four pairs of hangers in total, and here, only select one pair to follow the installation instruction. It requires that four pairs of hangers should be under the status of Partial view 2 and glass ought to be stuck to the side frame completely before you let your hands go and press down the glass.

## 11. Installation of pan







Place the pan to the cabinet cistern  
then adjust the pan to right position



Function test to ensure  
the cistern works well

