



Strip Light Kit Installation Guide - Single Colour

Installation Guide

Contents

Safety Information **Page - 2**

Applications **Page - 2**

Product List **Page - 2**

Installation **Page - 3**

Warranty Information **Page - 3**

Recycling & Disposal **Page - 4**

Safety Information

Please read carefully...

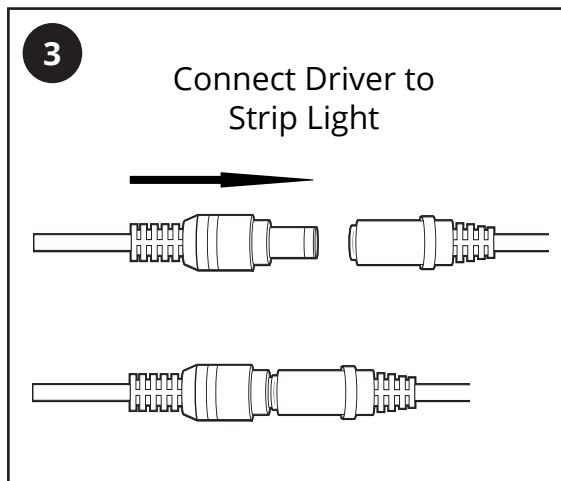
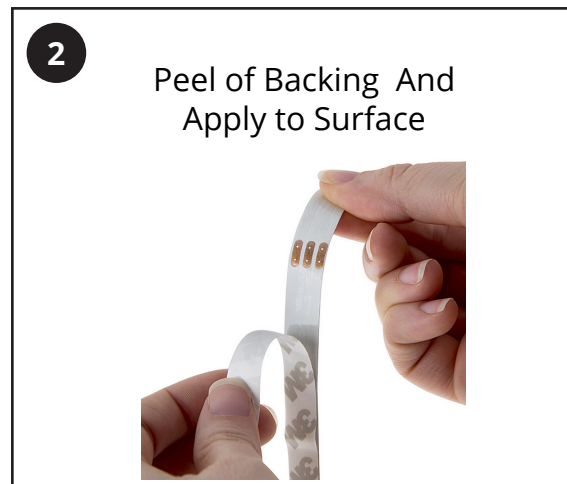
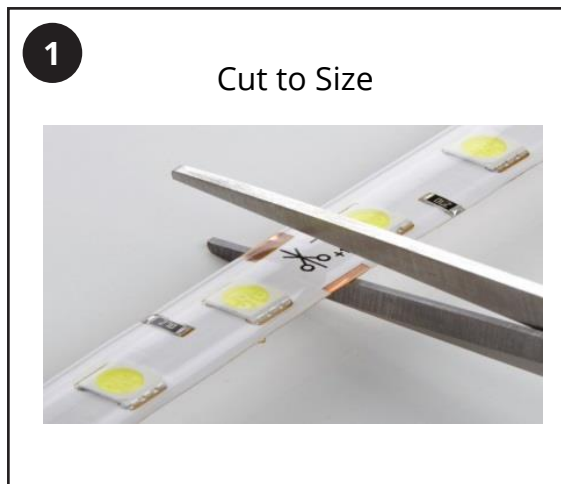
- ✓ Switch off the power while installing
- ✓ Avoid looking directly into the light when switched on.
- ✗ Do not modify this product, this will invalidate your warranty
- ✗ Read all the instructions in the manual before beginning installation if in doubt use a qualified electrician.
- ✓ IP20 - For indoor use only
- ✓ IP65 - For indoor or outdoor use
- ✓ Inspect the product for damage before installation.

Applications

- Cove lighting
- Architectural lights for canopy, corridor, windows and archways
- Backlight or edge lighting for signage
- DIY lights for home use
- Path and contour marking
- Decorative lights for Christmas, events, shows and exhibitions

Product List

- 1 x 5m length of single colour LED striplight
- 1 x 60W power supply
- 1 x Power lead with UK plug



Warranty Information

- *This product is covered by the standard Biard 3 limited year warranty for any manufacturing faults.*
- *The warranty starts from the date of purchase.*
- *Labour costs for installation of the Product are not covered under this warranty.*
- *The warranty is only valid when products are properly installed and operated as specified in this manual and the data sheets.*
- *All warranty queries should be through the stockist that the product was purchased through.*

Recycling & Disposal

The Waste Electrical and Electronic Equipment Directive (WEEE Directive) is the **European Community directive** 2012/19/EU on **Waste Electrical and Electronic Equipment (WEEE)** which, together with the **RoHS Directive** 2002/95/EC, became European Law in February 2003

The **WEEE** directive aims to reduce the amount of electrical equipment being produced and to encourage everyone to reuse, recycle and recover it.

In support of these guidelines and for environmental safety, do not dispose of any electrical equipment including those marked with the below symbols

When replacing old electrical devices with new ones the retailer is legally obligated to take back your old items for disposal free of charge. You can also recycle your old electrical devices free of charge at your local recycling centre. Please contact your local council for more information.



Manufacturer



Consult
Instructions
For Use

REF

Catalogue
Number