

Stelrad Vita Deco

Installation Guide

Contents

Product Information **Page 2**

Valve installation advice **Page 2**

Safety Information **Page 3**

Installation **Page 3/4**

Aftercare **Page 5**

Your Guarantee **Page 5**

Recycling & Disposal **Page 5**

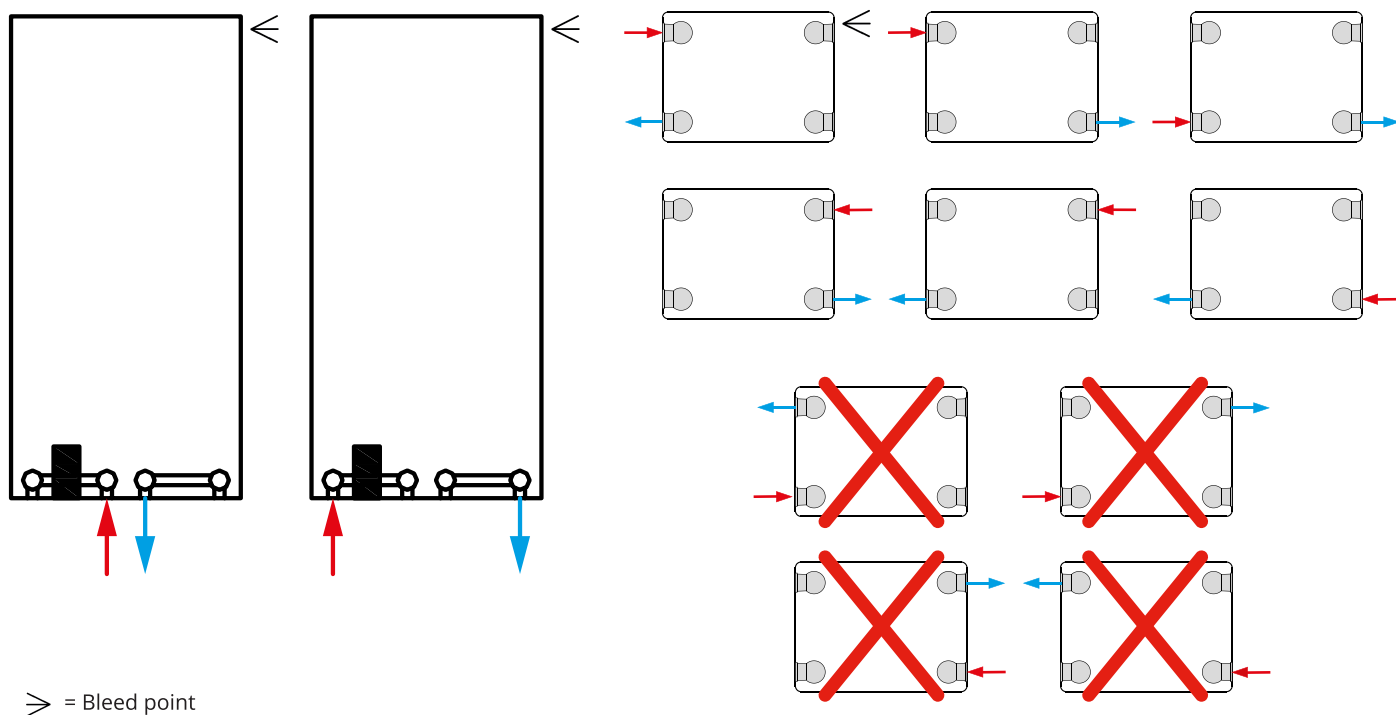
Contact Us **Page 5**

Product Information:

To ensure you can enjoy your radiator for as long as possible, it is essential you first **FLUSH YOUR HEATING SYSTEM WITH A CENTRAL HEATING CLEANSER**, this will clear any waste from the system. Following the cleansing of the system you must **PROTECT THE SYSTEM WITH A CENTRAL HEATING INHIBITOR**. These two simple steps will greatly increase the efficiency and lifespan of your central heating system. Failure to complete these steps increases the chance of pinhole leaks, and will also invalidate the guarantee on your radiator.

Valve installation advice :

Please ensure that your radiator valves are fitted as below diagrams ensuring that the bleed point always remains at the top of the unit.



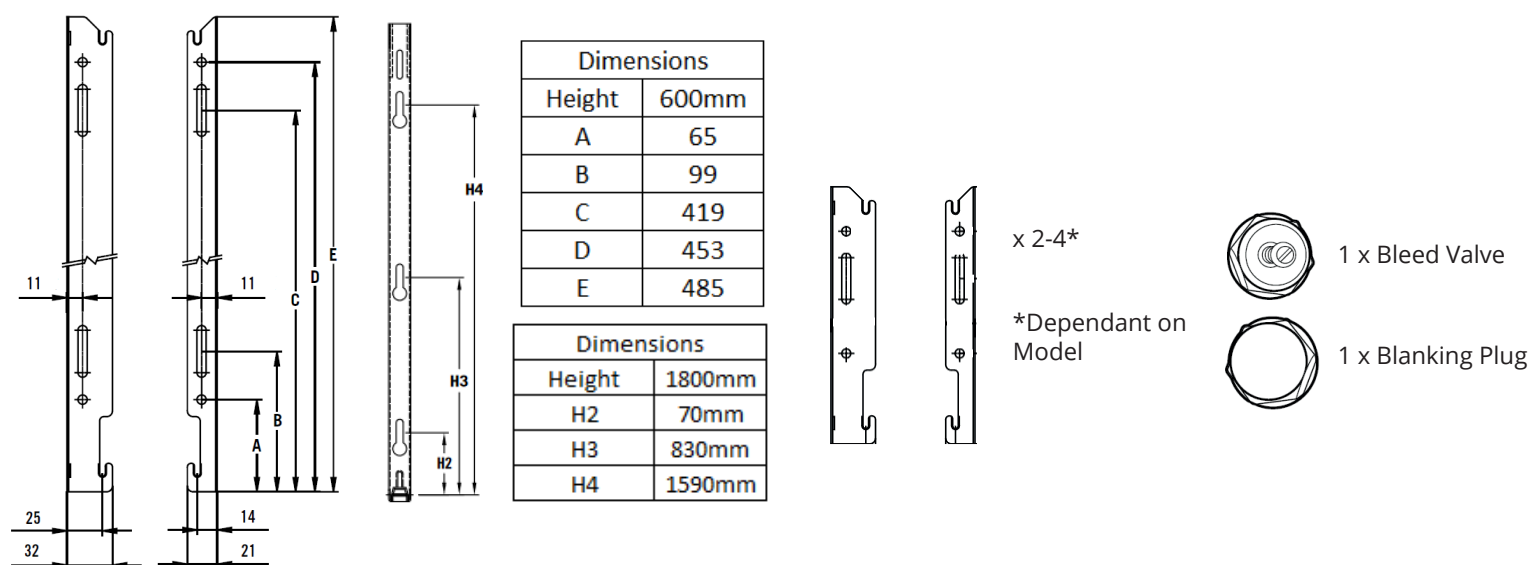
Safety Information:

Please read carefully...

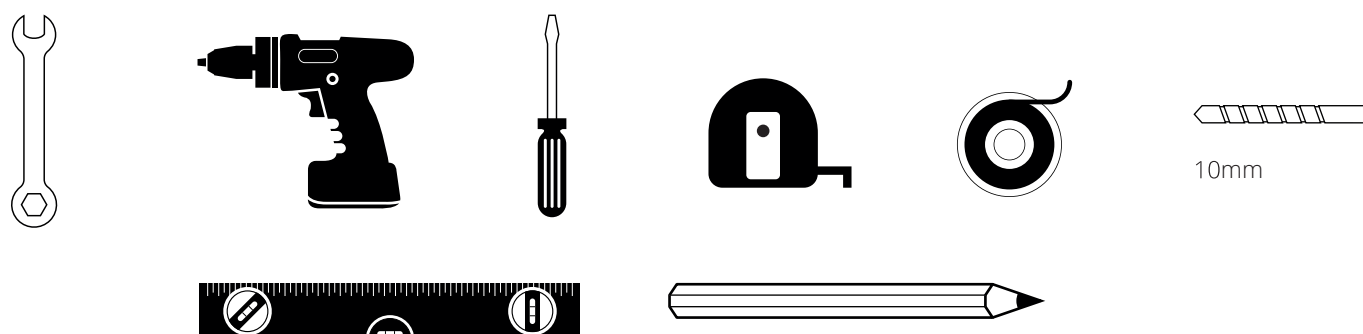
- ✓ This product is only suitable for use on indirect or sealed central heating systems inc. Combi boilers.
- ✗ Do not throw away any packaging until you have located all parts included
- ✓ This radiator must be installed by a qualified plumber or fully competent person.
- ✓ For your own protection we recommend that you wear safety boots and gloves.
- ✓ Inspect the finish of the product for signs of damage before installing.
- ✓ Ensure the fixings used will safely support the product on the surface it is being installed on.

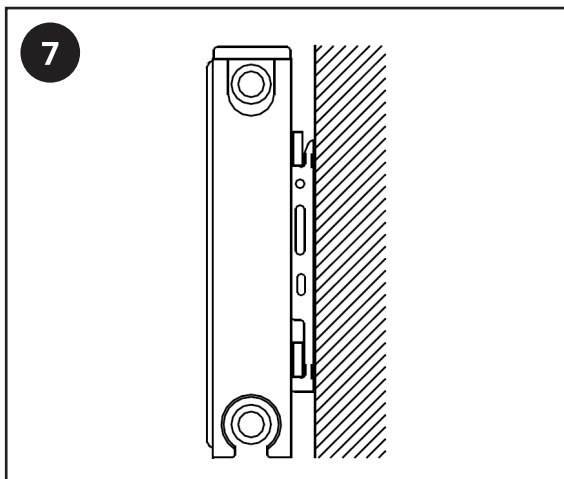
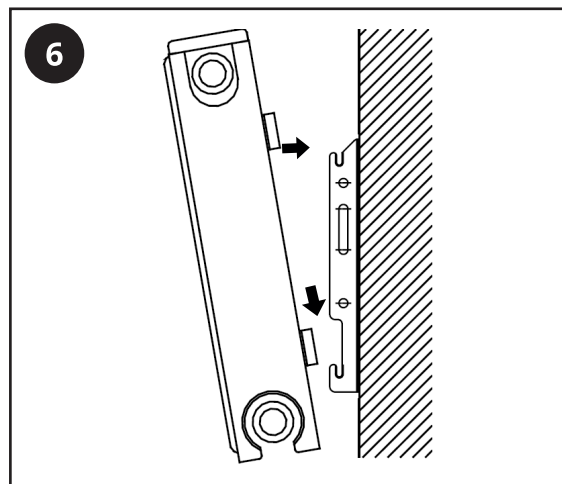
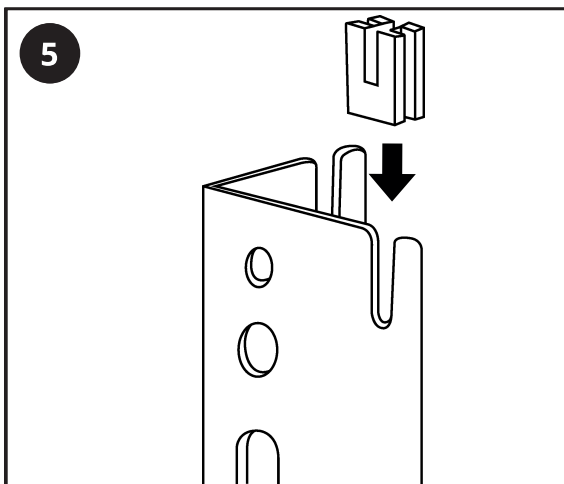
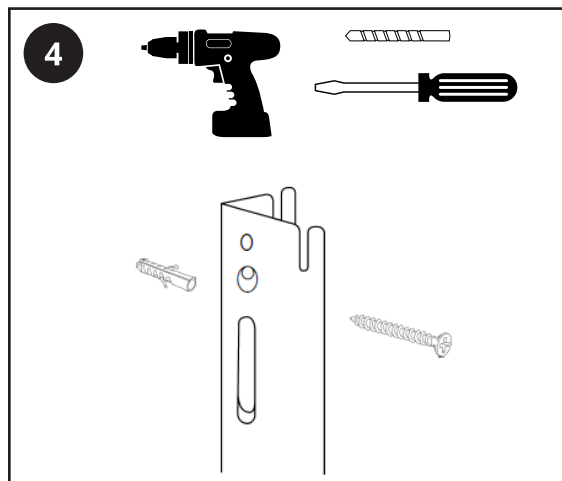
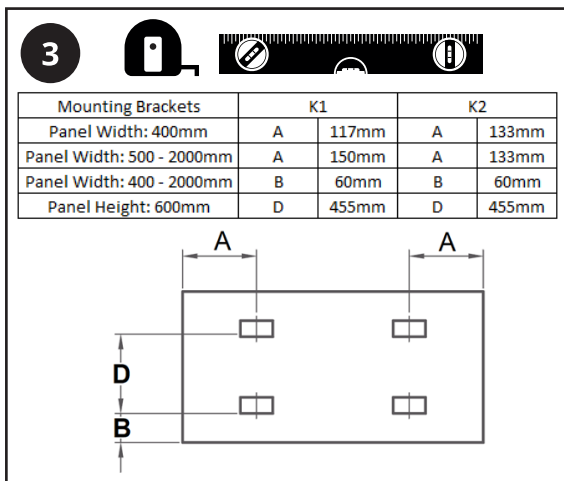
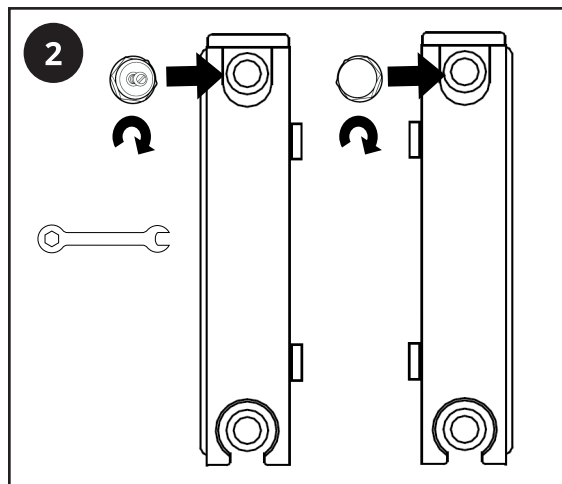
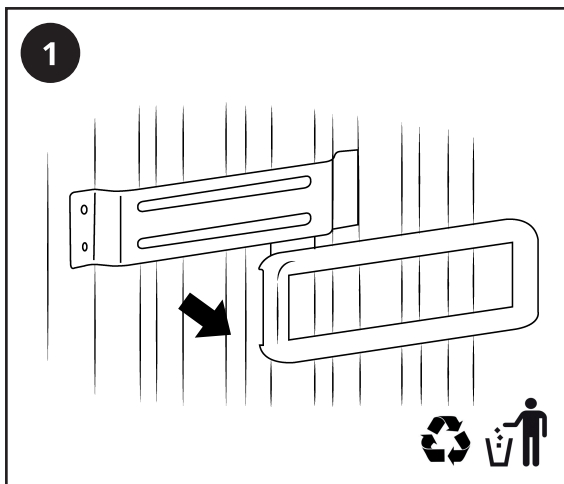
Installation:

Included:



Tools required for installing:





Aftercare

Clean any marks with a soft dry cloth, for stubborn stains please clean with mild soapy water and buff out with a soft cloth. DO NOT use abrasive or acidic cleaners, if you are unsure, please contact us first.

Your Guarantee

- To find the specific guarantee for this product please refer to the website.
- The guarantee starts from the date of purchase.
- The guarantee only applies to manufacturing related issues it does not apply to issues that are found to be a result of poor installation.
- Labour costs for installation of the product are not covered under this warranty.

Recycling and Disposal

Please recycle the packaging in accordance with your local government regulations on waste handling, and follow the same advice at the end of the products life.

Product - Steel.

Packaging - Cardboard, plastic.

Contact us

Unit 1 & 2 Dawson Ct
Burnley
Lancashire
BB11 5UB