

# Milano

## Push Button Thermostatic Shower Valve

### Installation Guide

#### **Contents**

Safety Information **Page - 2**

Working Pressure and Temperature **Page - 2**

Components and dimension drawing **Page - 2**

Installation **Page - 3**

Operation **Page - 4**

Maintenance **Page - 5**

Troubleshooting **Page - 5**

Warranty information **Page - 6**

# Safety Information

## *Please read carefully...*

- ✓ We recommend that this product is installed by a qualified plumber / bathroom installer.
- ✓ Please check the product on arrival to ensure it is undamaged and all parts are included.
- ✓ Ensure that your Hot and Cold feed pipes are at a balanced pressure to avoid temperature issues with the valve.
- ✓ Flush the water system through before fitting to ensure that no Swarf, solder and other impurities can enter the valves.
- ✓ Turn off the water supply before commencing work, this should be done at the isolation valves (if fitted) or the mains stopcock.

## Working Pressure and Temperature

The valve is suitable for both high and low pressure installation. To ensure that the valve works well under low water pressure, the cold water storage tank must be at least 2 meters above the installed position.

**Maximum Static Pressure: 10 Bar / 145 PSI**

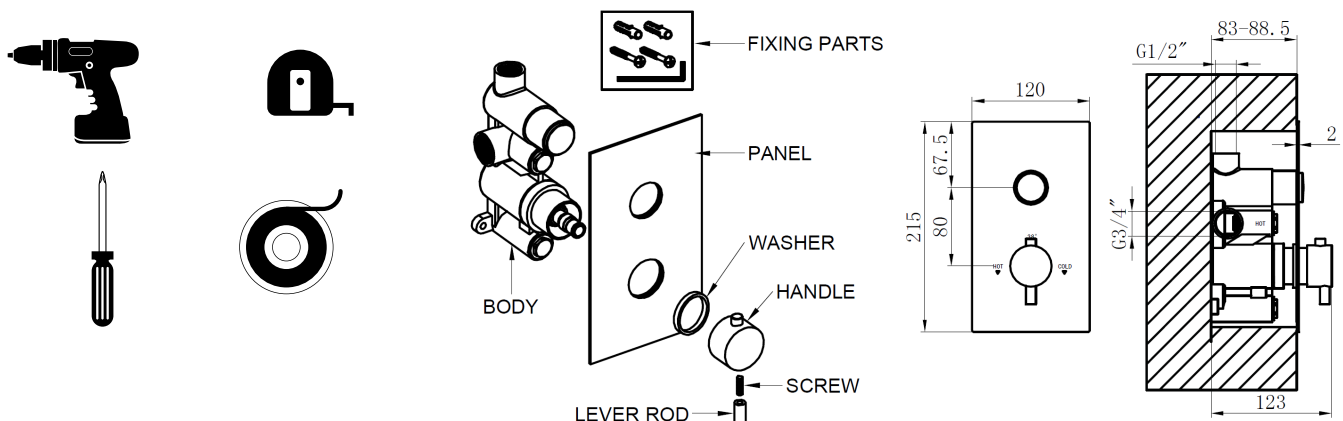
**Flow Pressure, Hot & Cold: 1-5 Bar / 14 - 72 PSI**

**Hot supply Temperature: 55-65°C**

**Cold supply Temperature : 5-25°C**

## Components and dimension drawing

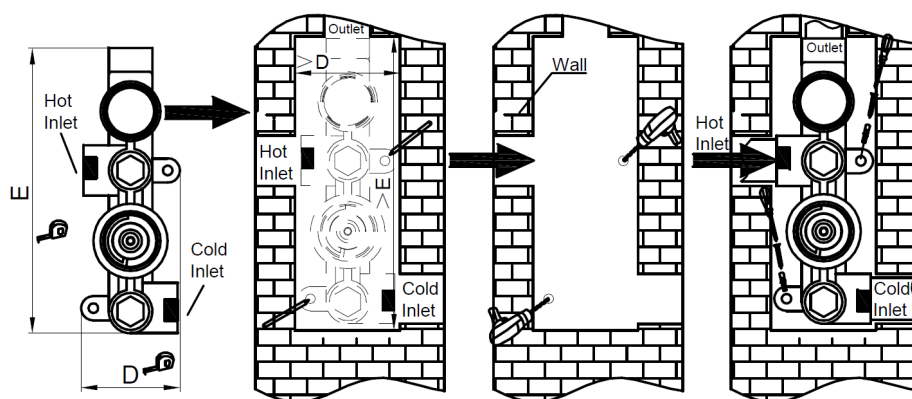
### Tools Required -



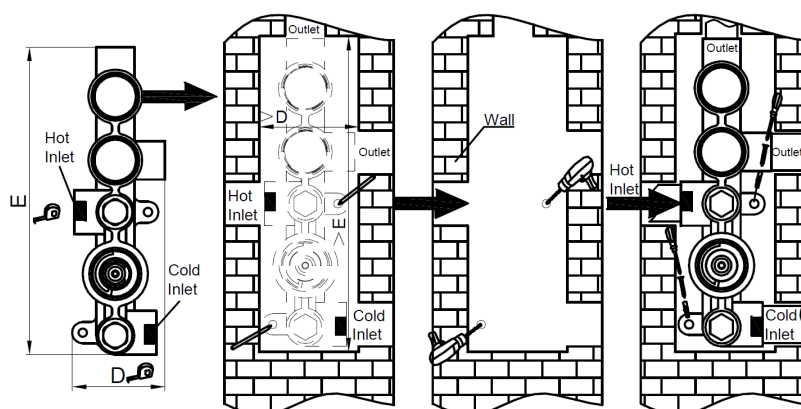
# Installation

Determine the fixing position for the valve. Make a recess in the wall accordingly to the dimension of the shower valve and mark required installation holes and sizes. Drill those holes and insert wall plugs into them. Connect the inlet and outlet to the correct pipes and seal appropriately. Screw shower valve body in position properly.

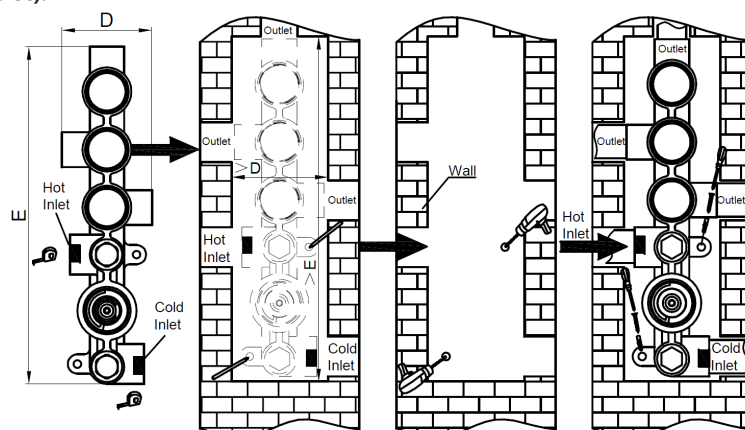
## TWIN VALVE (single outlet):



## TRIPLE VALVE (Twin outlet):

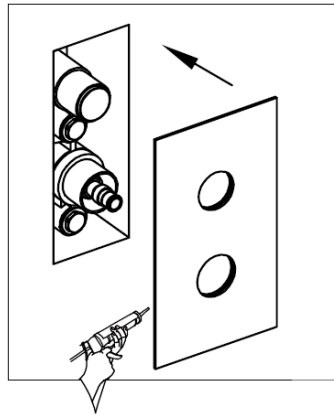


## FOUR HOLE VALVE (Triple outlet):

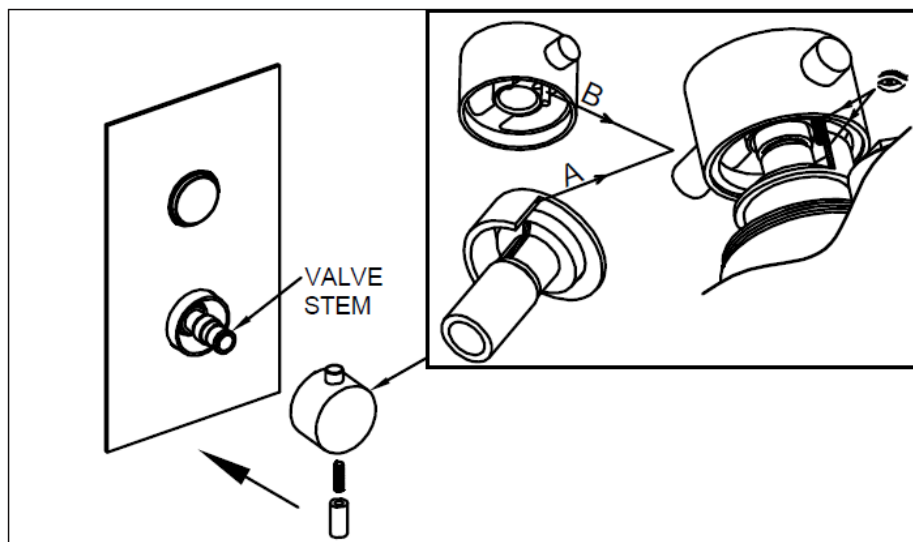


# Installation

Apply clear silicone sealant around the back edge of the cover plate and carefully press into Position (do not fill in the recess the valve is in, as access may be required for maintenance).



Fit the stop lug and handle body with part A and B (the stopper) aligned. Then screw and tighten the handle lever to secure.

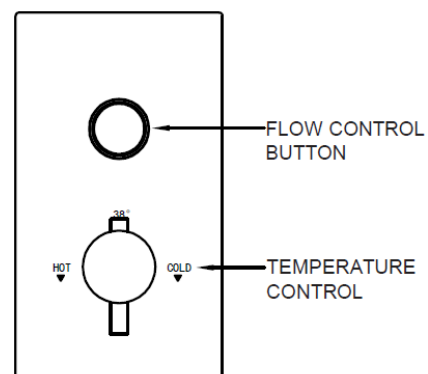


## Operation

1. Use the push button to control water flow.
2. The temperature control knob is pre-set to deliver water at a temperature of 38°C, if for any reason this is not the case and the water is hotter/colder than 38°C then follow the temperature setting procedure below to reset it.

### TEMPERATURE SETTING PROCEDURE:

Unscrew the handle, the temperature is up when the stem is turned anti-clockwise and the temperature is lower when the valve stem is turned clockwise. When the temperature is correctly set, fix the handle back to the valve as shown above.



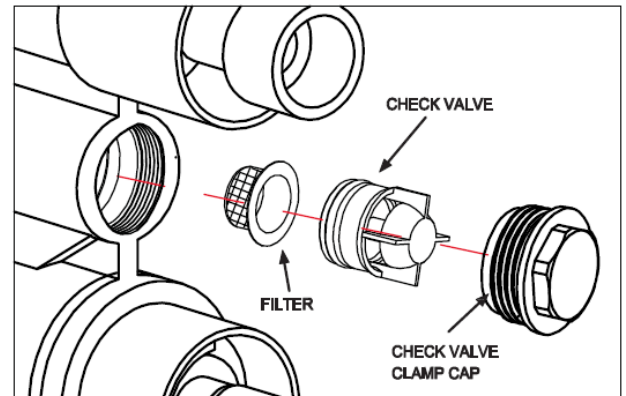
# Maintenance

After long usage of the thermostatic valve, it is normal for debris in the water pipe to collect, which will affect the flow and sensitivity of temperature adjustment. To prevent this please follow the procedure outlined below.

To avoid damage, please remove all chrome parts before any maintenance takes place.

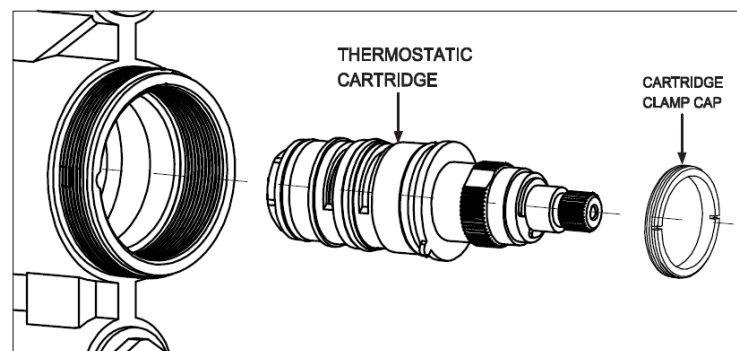
## FILTER MAINTENANCE

1. Remove the check valve clamp cap.
2. Use pliers to remove the check valve and filter.
3. Wash the filter with clean running water, dry and lightly grease the seals (use Silicone grease only).
4. Put back the filter and check valve, then tighten the clamp cap.



## THERMOSTATIC CARTRIDGE MAINTENANCE

1. Remove the cartridge clamp cap.
2. Grip the cartridge and pull it out of the valve.
3. Wash the cartridge with clean running water, dry and lightly grease the seals (use Silicone grease only).
4. Put back the thermostatic cartridge and tighten the clamp cap.



# Troubleshooting

## 1. Output water temperature does not correspond with temperature set .

Cause: Thermostat has not been adjusted based on the existing home water system .

Remedy: Adjust the thermostat , refer to "Temperature Setting" procedure.

Cause: Hot Water temperature too low.

Remedy: Adjust the water heater , increase hot water temperature to 65 °C.

## 2. Crossflow, cold water being forced into hot water pipe, or vice versa, when valve is closed .

Cause: Non-return valves dirty or leaking .

Remedy: Clean the non-return valves or replace with new non-return valves if necessary.

## 3. Water will not run hot enough when first installed .

Cause: Wrong maximum temperature setting .

Remedy: Adjust the maximum temperature , refer to "Temperature Setting" procedure.

## Warranty Information

---

- *This product is covered by a 10 year guarantee.*
- *The guarantee starts from the date of purchase.*
- *The guarantee covers you against issues caused as a result of manufacturing related issues, it does not apply to issues that are found to be a result of poor installation.*
- *Labour costs for installation of the product are not covered under this warranty.*

## Aftercare

---

Ensure that the product is covered in poor weather, to avoid frost damage to pipes, drain the unit off and close the water-feeds.

Clean with a soft dry cloth, do not use abrasive cleaners.

## Recycling and Disposal

---

Please recycle / dispose of this product in accordance with your local council / government guidelines.

## Contact Us

---

MILANO  
Unit 1 & 2  
Dawson Ct  
Burnley  
BB11 5UB