

## Designer Radiators Advice and Installation

Please check the radiator for any defects prior to installation.

Do not throw away packaging until you have located and confirmed that you have all included parts, see parts included.

For your own protection we recommend that you wear the relevant protective clothing when fitting this radiator.

Check the the product for signs of damage before installation.

The provided fixings are for solid brick walls only, if installing on any other surface please check that the fixings safely support the radiator.

## Product Information

The maximum operating pressure should not exceed 4 Bar.

If the temperature exceeds 48°C (or 120°F), please apply a warning sign to avoid scolding accidents.

Before fitting it is advised to flush the system with central heating cleaner, it is essential you add a central heating inhibitor (protector), failure to protect the radiator may result in pin hole leaks and may also invalidate the guarantee.

## Aftercare

To clean any marks use a soft dry cloth, for stubborn stains clean with mild soapy water and dry fully.

Do not use abrasive or acidic cleaners

## Guarantee

The guarantee covers you against issues caused as a result of manufacturing, issues due to poor installation will not be covered by the guarantee.

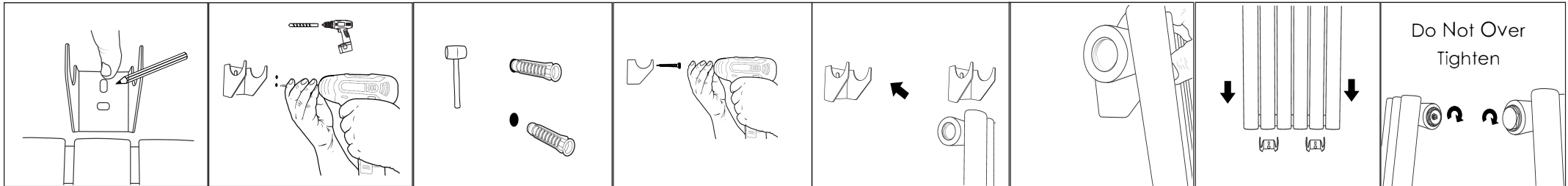
For the specific guarantee on your product please refer to the website.

## Recycling

Please recycle the packaging in accordance with your local government regulations on waste handling, and follow the same advice at the end of the products life. Product - Steel.

Packaging - Cardboard, plastic, steel.

## Installing the Radiator



**Parts Included:** 2 x Big Brackets/2 x Small Brackets - 8 x Screws - 8 x Wall Plugs - 1 x Bleed Valve - 1 x Blanking Plug - 4 x Plastic Bracket half Moon Washers

**Fitting the Valves:** Always ensuring that a venting plug is fitted at the top of the radiator.

