

# Combination Toilet & Basin Unit

## Installation Guide

### **Contents**

Safety Information **Page - 2**

Installation **Page - 2**

Warranty Information **Page - 5**

Recycling & Disposal **Page - 5**

Aftercare **Page - 5**

Contact Us **Page - 5**

# Safety Information

---

## ***Please read carefully...***

- ✓ Check the product for defects before installing.
- ✓ We recommend this product is installed by a qualified installer.
- ✓ For ease of installation we recommend using Flexible Pan and Basin waste pipes.
- ✓ Please wear appropriate PPE while installing (safety shoes).
- ✗ Do not attempt to modify this product in anyway.

# Installation

---

## ***Parts needed:***

Back to wall combined basin and WC unit

## ***Tools required for installing:***

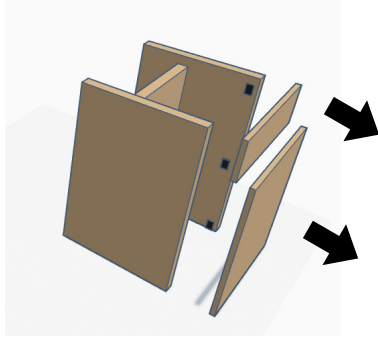
Drill

Hole saw attachment for drill with internal arbor.

Jigsaw or handsaw

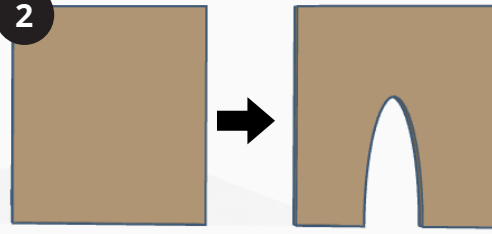
Adjustable spanner / wrench

1



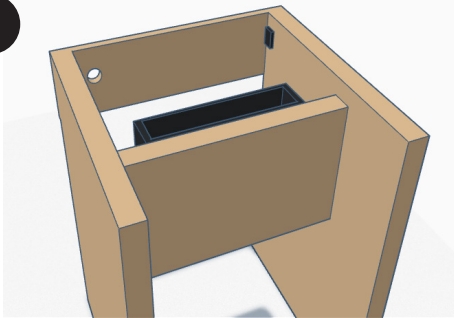
Remove both front panels from the unit by lifting and pulling them away from the frame.

2



Using your purchased toilet as a template, cut a hole in the lower panel to allow for the flush pipe and waste pipe, but is still small enough for the toilet to cover.

3



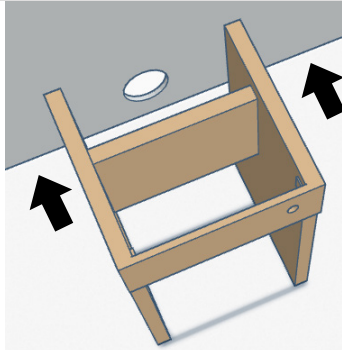
Mark out and drill the hole for your flush button, making sure that it will not foul against the cistern once fitted.

4



Fix your basin tap and the waste and trap to the basin .

5



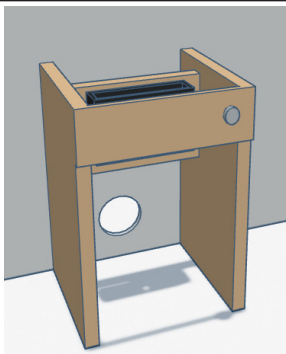
Once you have decided on the location of the unit, offer it to the wall, making sure the soil pipe is as central as possible and fasten the frame to the wall via the fixing brackets.

6



Connect your basin to the drain and the basin tap to your hot/ cold connection, it is easy to access the unit from the front to complete this step. please note that this can be time consuming given the small workspace available.

7

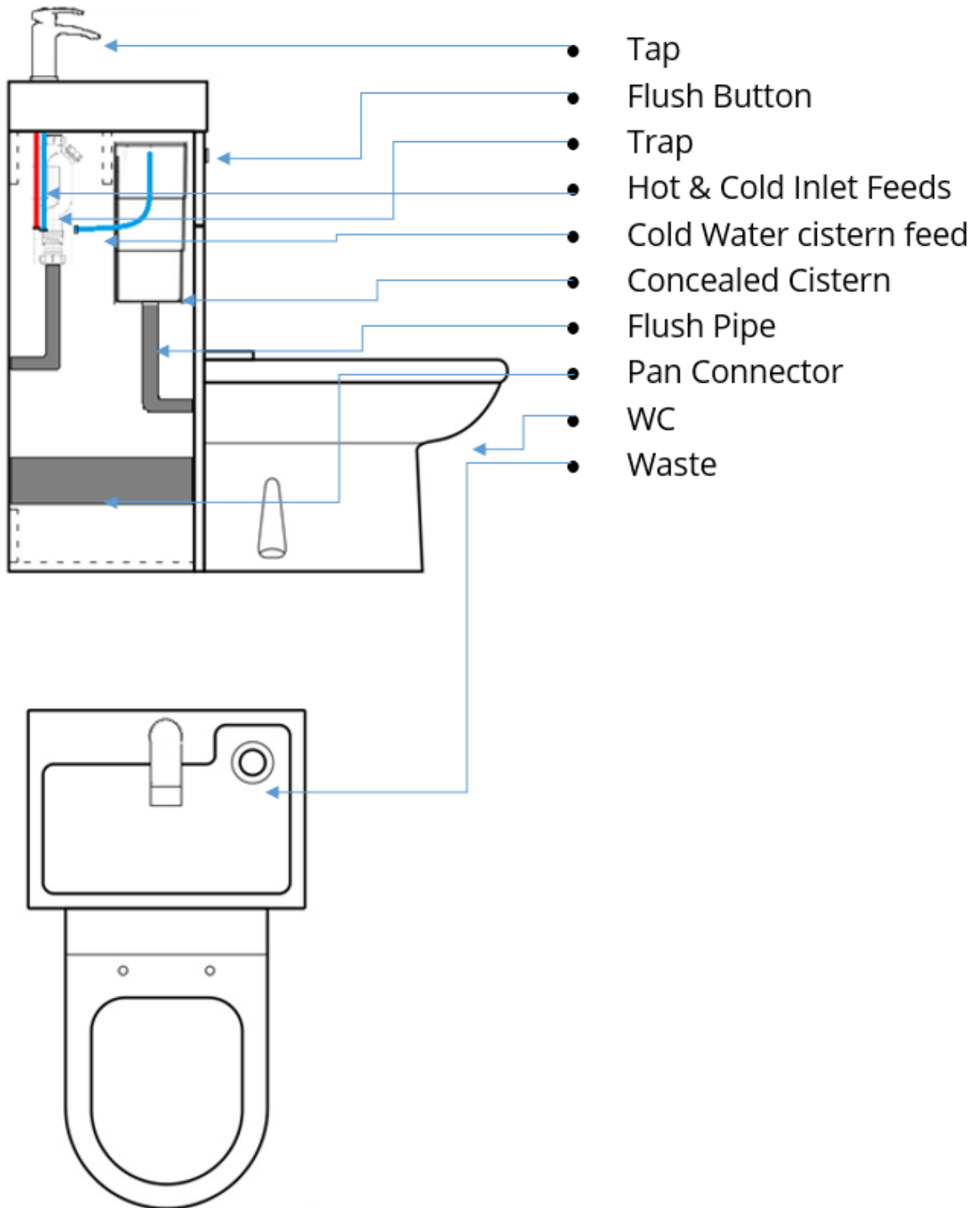
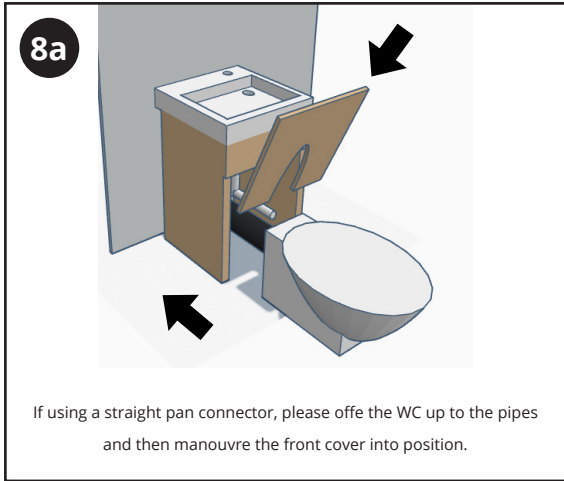


Assemble the cistern as shown in the cistern assembly diagram and attach it to the fixing bar as marked out earlier You may also connect the water supply to the cistern and basin .

8



Connect the flush pipe and flexible flush pipe and attach to the pan. You may need to cut down the flushpipe to get the correct fit.



## Aftercare

---

Clean any marks with a soft dry cloth, for stubborn stains please clean with mild soapy water and buff out with a soft cloth. DO NOT use abrasive or acidic cleaners, if you are unsure, please contact us first.

## Your Guarantee

---

- To find the specific guarantee for your product please refer to the website.
- The guarantee starts from the date of purchase.
- The guarantee covers you against issues caused as a result of manufacturing related issues, it does not apply to issues that are found to be a result of poor installation.
- Labour costs for installation of the product are not covered and the guarantee does not cover you for consequential loss.

## Recycling and Disposal

---

Please recycle the packaging in accordance with your local government regulations on waste handling, and follow the same advice at the end of the products life.

Product - Ceramic / MDF

Packaging - Cardboard, plastic.

## Contact us

---

LDG

Unit 1&2 Dawson Ct

Burnley

BB11 5UB