

Floor Mounting a WC Pan

INFORMATION GUIDE

Contents

Safety 9ei Jda Ybh**Page - 2**

Installation **Page - 1**

Safety information **Page - 3**

Warranty Information **Page - 11**

Recycling & Disposal **Page - 11**

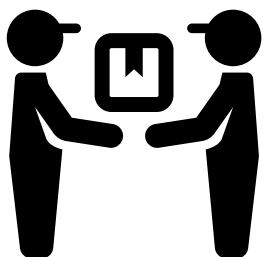
Safety Equipment

Please read carefully...

Please ensure that you wear appropriate Safety equipment while installing a toilet.

Toilets can be heavy and have sharp edges in areas where you might try to pick them up .

We advise that a second person is present to assist with lifting the toilet when required.



Safety Information

Please read carefully...

- ✓ Check that all required components have been provided.
- ✗ Do not attempt to install a toilet if you notice any cracks or damage to the glaze. Contact the supplier.
- ✓ We recommend that installation and fixing is performed by a qualified installer.
- ✓ Be careful when handling the toilet as it can contain sharp edges were appropriate PPE.

Installation

Parts needed:

Floor Mounted Toilet and Cistern

Tools required for installing:

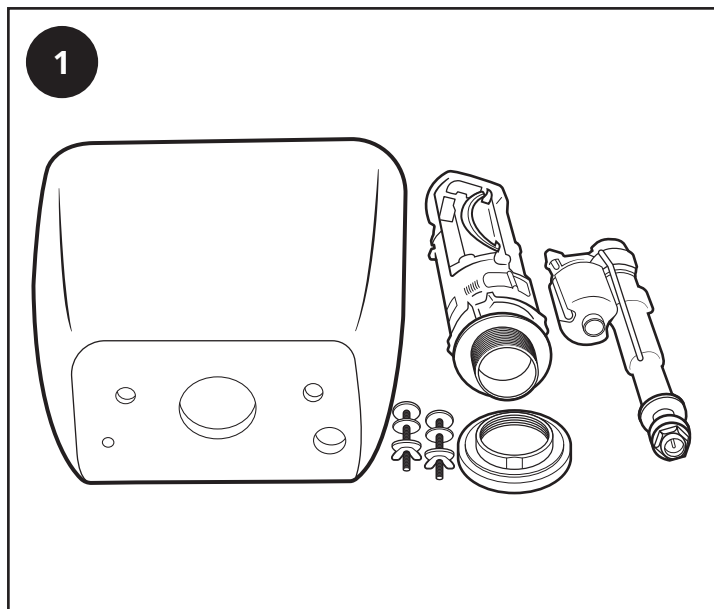
Drill

Spirit Level Silicone

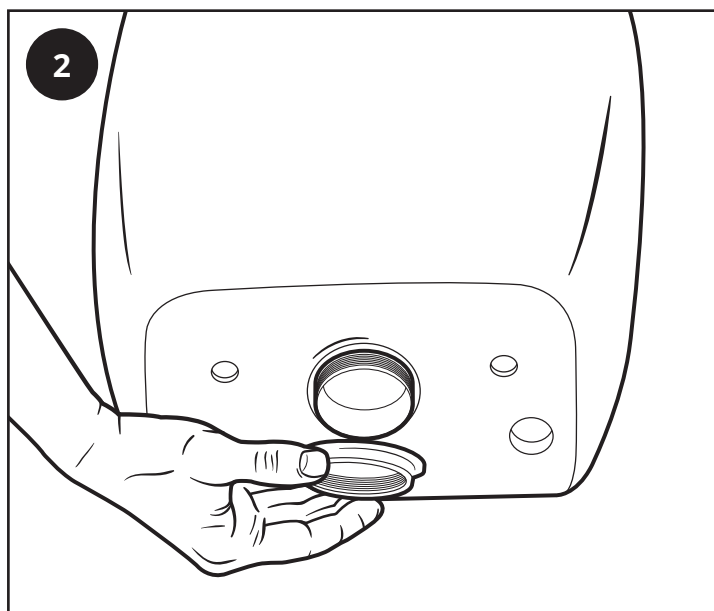
Sealant

Phillips Screwdriver

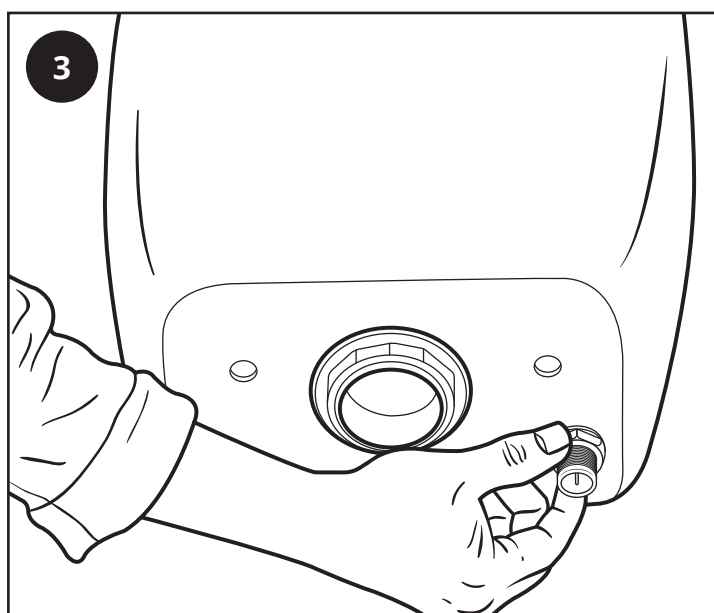
Adjustable Spanner



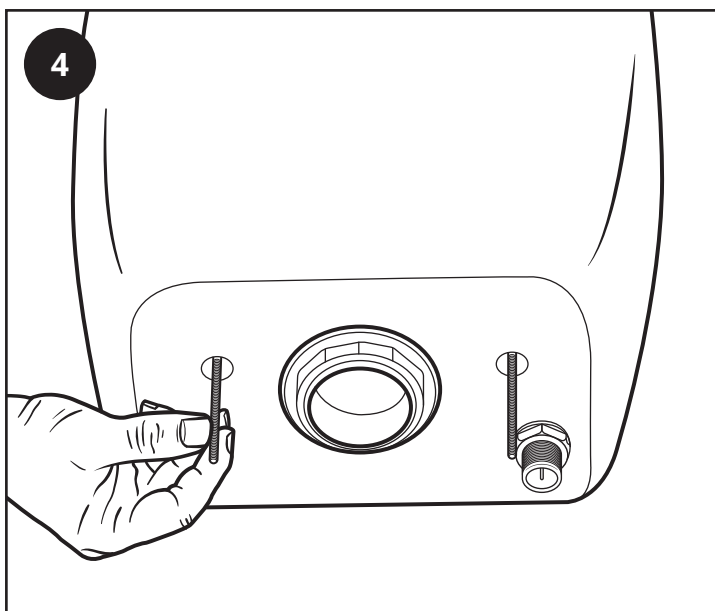
Lay out all of the provided parts and confirm that everything required is present and is free from damage.



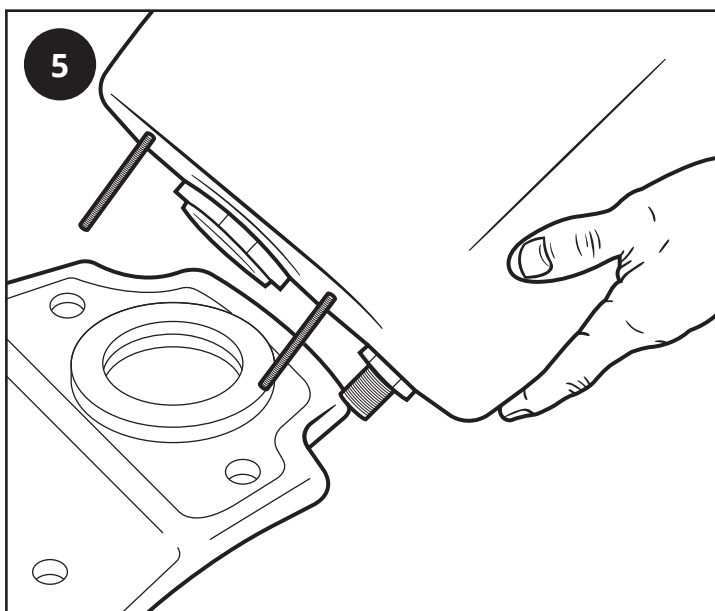
For assembling the internal cistern (the fill / flush mechanism) please follow the guidance sheet provided with it.



Take care when tightening any fixings, Ceramic is fragile and can easily break if overtightened.

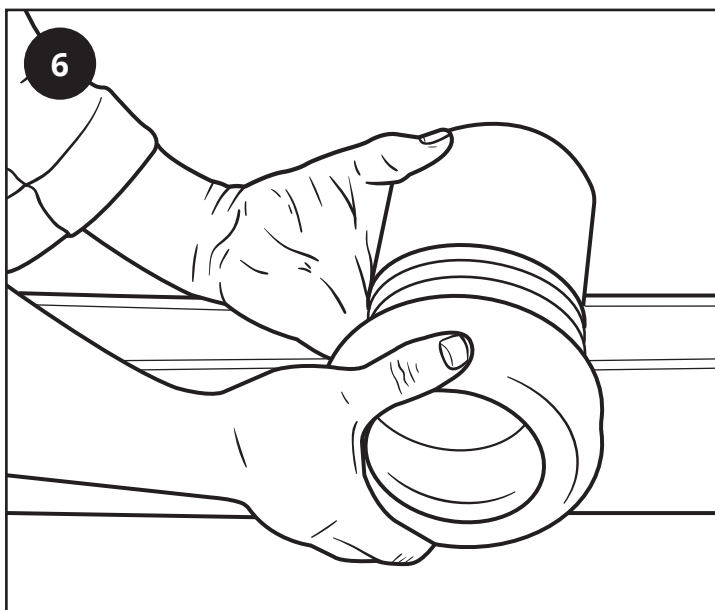


Feed the connecting bolts through the inside of the cistern making sure that the provided washer are added to keep the cistern water tight.



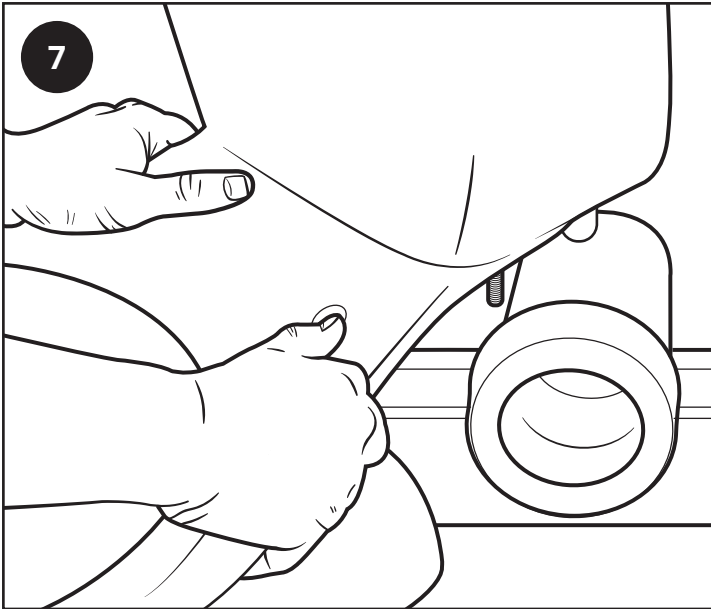
Place the close coupled washer carefully in position making sure it is correctly lined up.

Then lower the cistern into position and secure to the toilet pan using the provided fixings and washers.

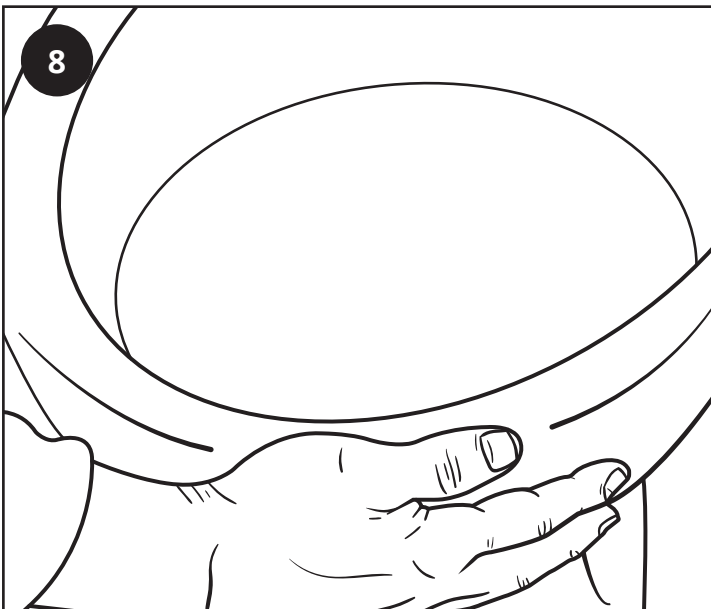


Insert your pan connector into the waste pipe making sure it fits snugly and is sealed all the way around .

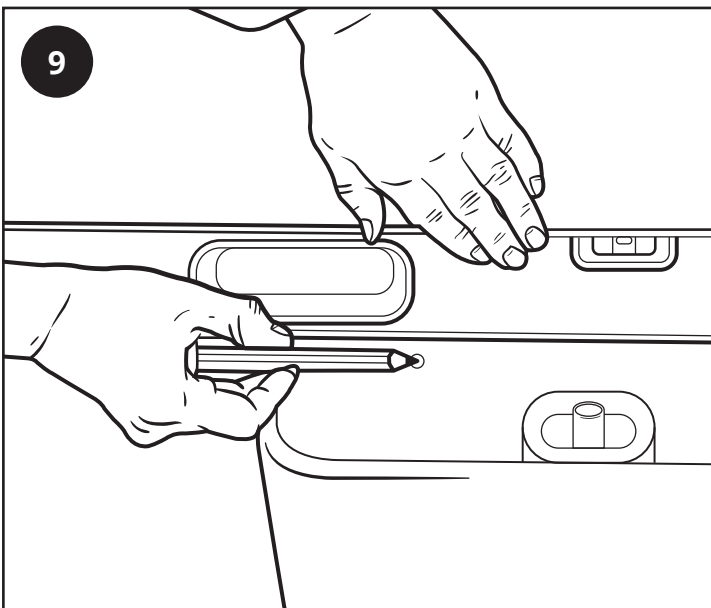
As per the image, a standard straight connector has been used, depending on the location of your waste pipe a different connector may be required.



Position the toilet near the waste pipe, double check that the connections align, if they do not you may need to use an offset pan connector.

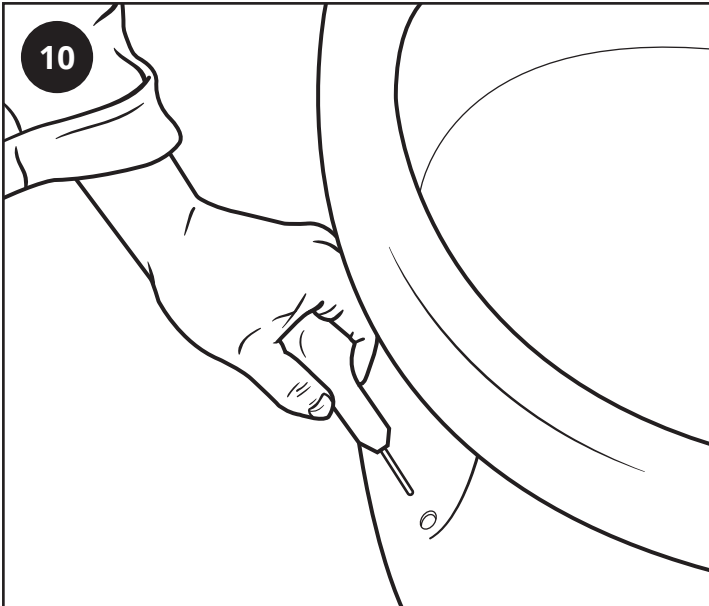


Gently push the toilet into the pan connector making sure that it goes in all the way up to the collar on the connector.

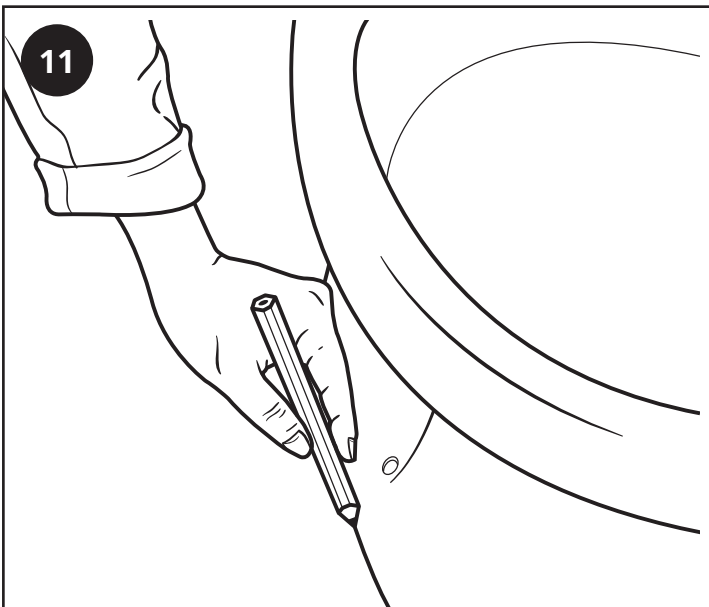


Check that your cistern is level by placing a spirit level across the top (with the lid removed).

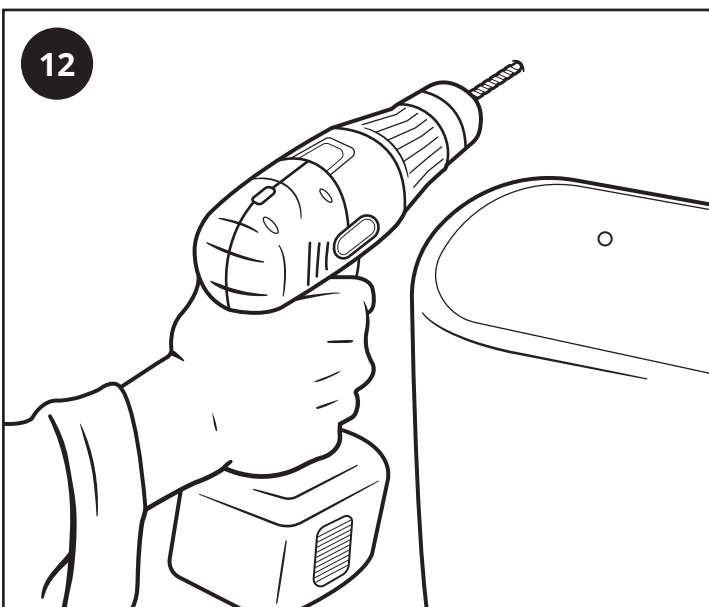
Once you have confirmed that it is level, mark the fixing holes through the back of the cistern.



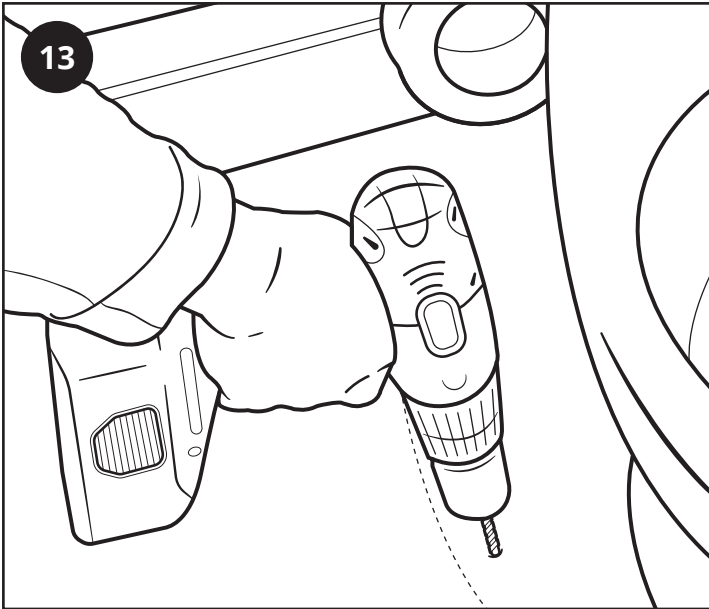
Check that the pan is level using a spirit level and accurately mark the fixing holes in the base of the pan.



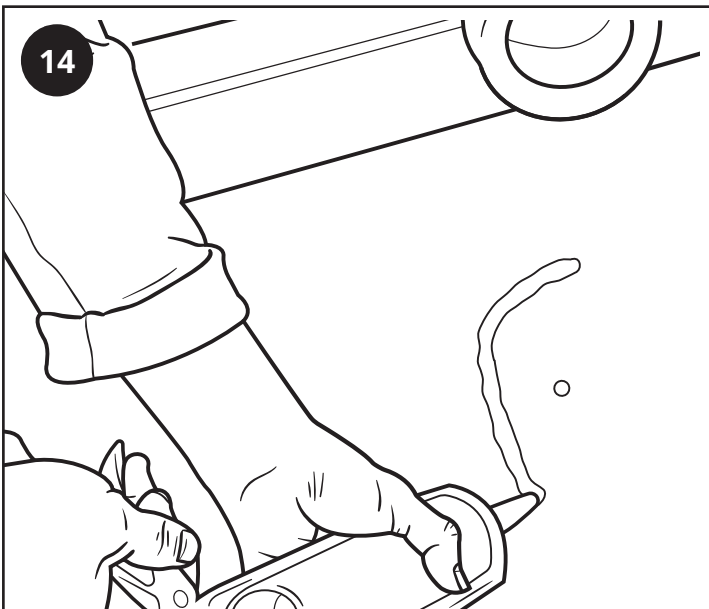
Using a pencil, draw around the base of the pan, this will ensure correct positioning when it comes to final fixing.



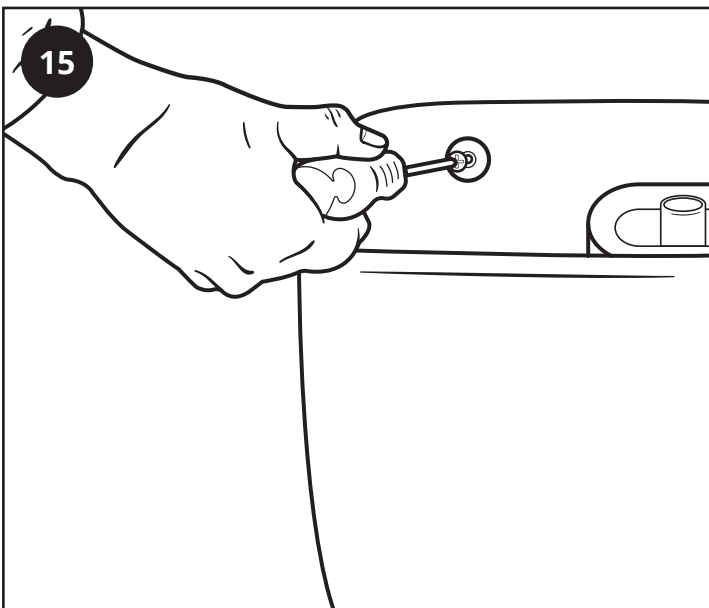
Pull the toilet away from the wall. Drill the previously marked cistern fixing holes and use suitable wall plugs for the surface in question



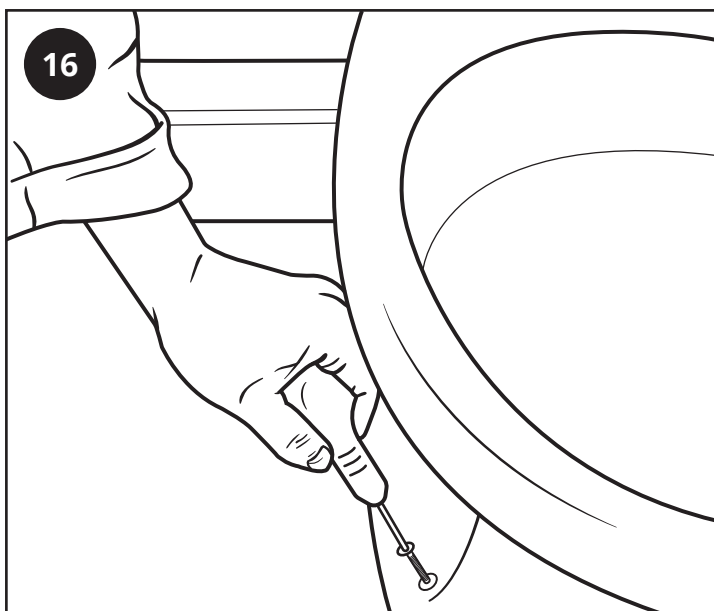
Drill holes for the marked floor mounting screws, again inserting suitable wall plugs for the required surface.



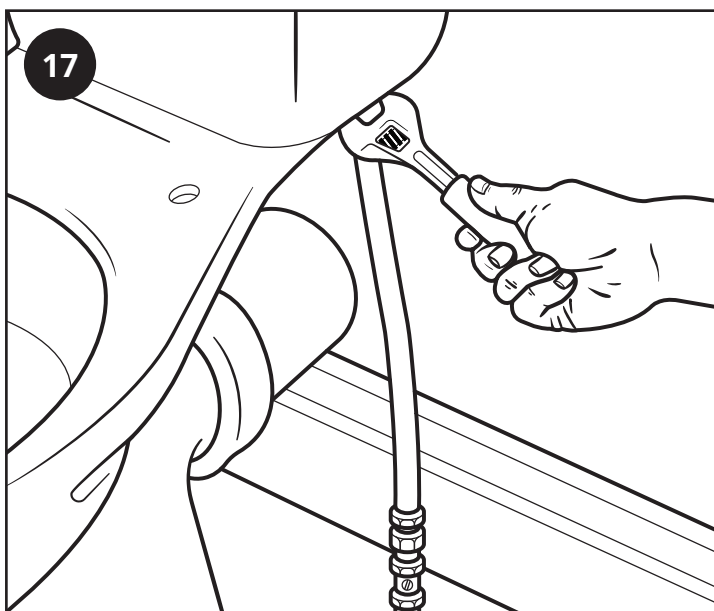
Apply silicone sealant to the inside of the marked pencil line. this will be where the toilet base is finally mounted to.



Position the toilet carefully onto the silicone sealant and secure the cistern in place. Please make sure any provided washers are used to ensure a watertight seal.

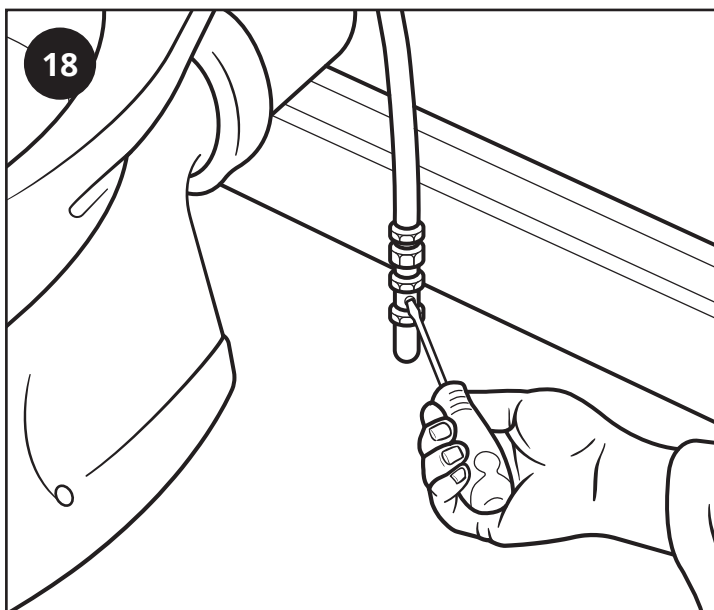


Fix the pan to the ground with fixing screws again using any provided washers.

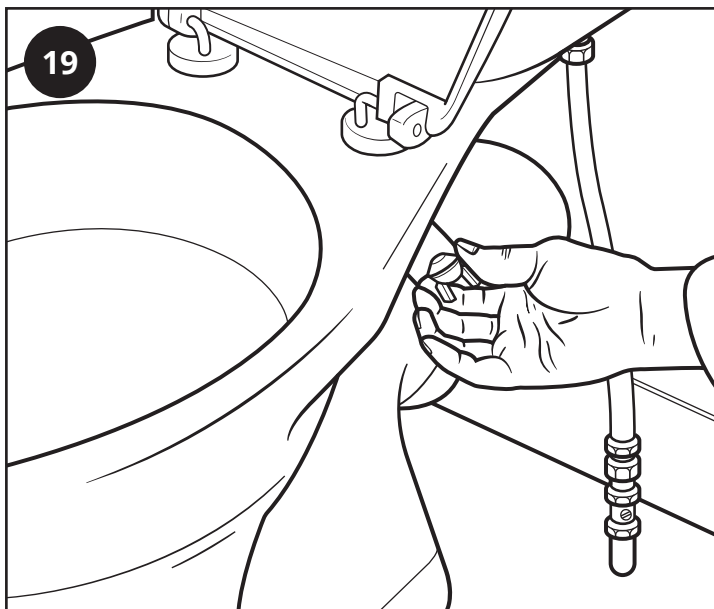


Reconnect the cold water supply using appropriate copper pipe.

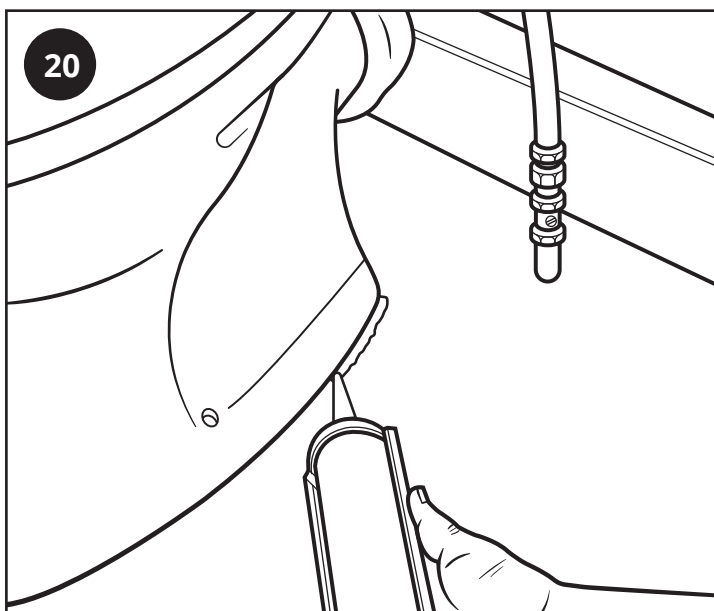
n.b - a flexible connector may be required depending on the position of the inlet connection on the cistern



Open the isolation valve on the water pipe, check for leaks at any of the pipe joints, flush the WC and check the pan connector for leaks.



Fit the WC seat following the instructions provided with the seat.



Finally run a bead of silicone around the exterior base of the WC pan to ensure a watertight seal .

Aftercare

Clean any marks with a soft dry cloth, for stubborn stains please clean with mild soapy water and buff out with a soft cloth. If you are unsure, please contact us first.

Your Guarantee

- To find the specific guarantee for your product please refer to the website.
- The guarantee starts from the date of purchase.
- The guarantee covers you against issues caused as a result of manufacturing related issues, it does not apply to issues that are found to be a result of poor installation.
- Labour costs for installation of the product are not covered and the guarantee does not cover you for consequential loss.

Recycling and Disposal

Please recycle the packaging in accordance with your local government regulations on waste handling, and follow the same advice at the end of the products life.

Product - Ceramic

Packaging - Cardboard, plastic,

Contact us

LDG

Unit 1&2 Dawson Ct

Burnley

BB11 5UB