

# biard

## BLBATH4

## Installation Guide

### ***Contents***

Safety Information **Page - 2**

Installation **Page - 3**

Warranty Information **Page - 5**

Recycling & Disposal **Page - 5**

# Safety Information

---

## *Please read carefully...*

- ✓ Switch off the power while installing
- ✗ Do not use this product with a dimmer switch
- ✓ We recommend installation is performed by a qualified electrician
- ✓ Avoid looking directly into the light when switched on.
- ✗ Do not modify this product, this will invalidate your warranty
- ✗ Read all the instructions in the manual before beginning installation if in doubt use a qualified electrician.
- ✓ IP44 - For indoor use only.
- ✓ Inspect the product for damage before installation

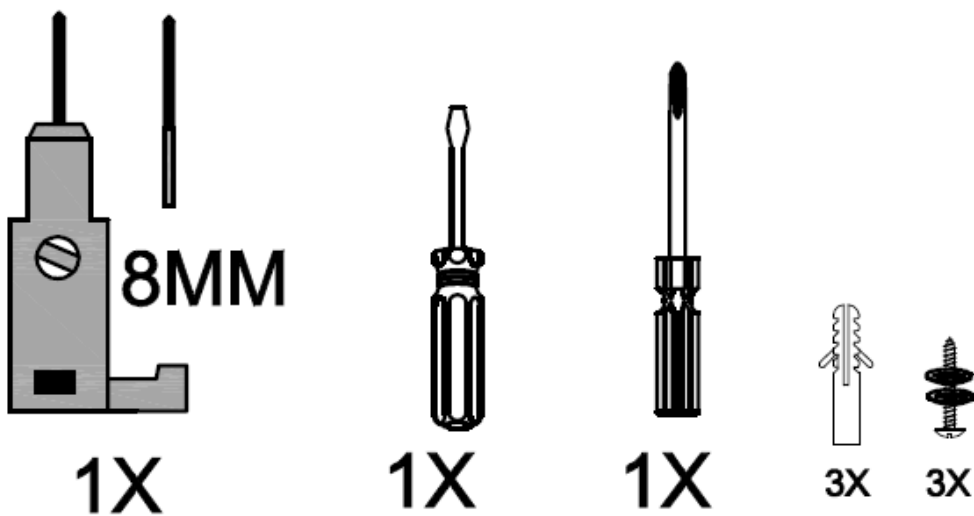
---

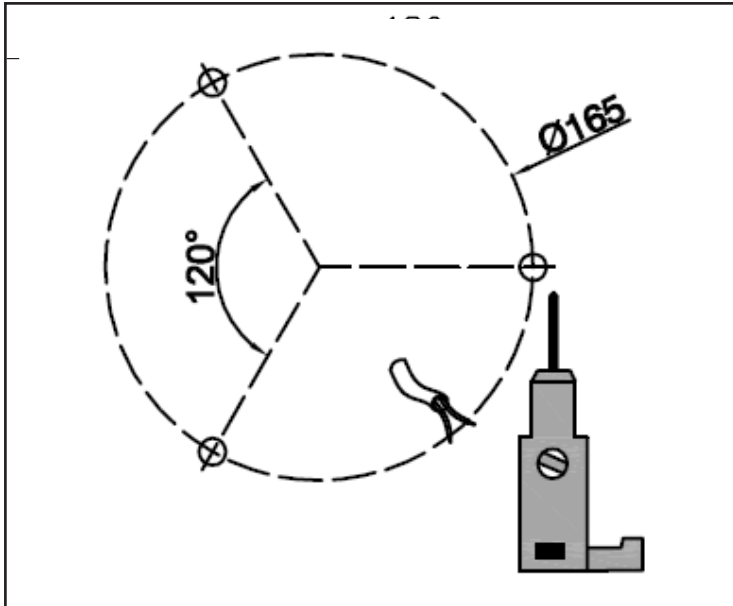
## Other Information

### ***RISK OF FIRE***

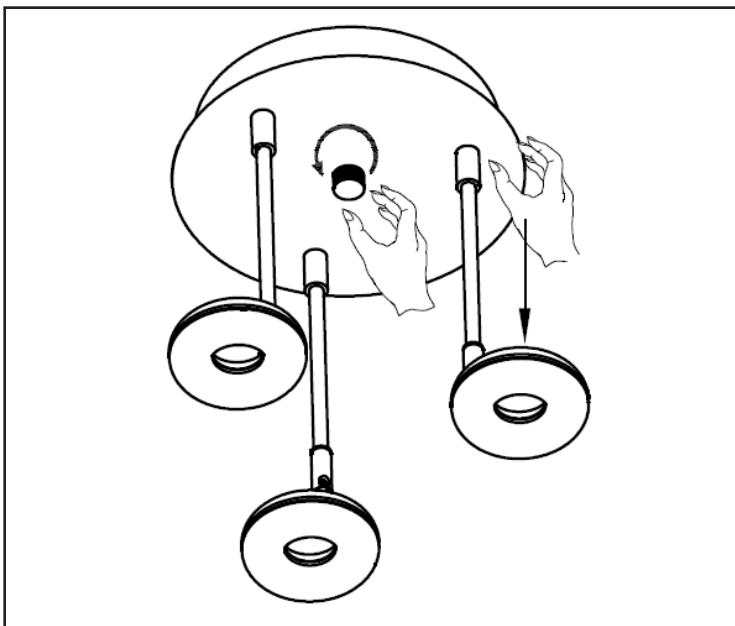
Clearance required from Floor- Min 5 feet  
Clearance from any flammable material - Minimum 6 inches

### ***Parts required-***

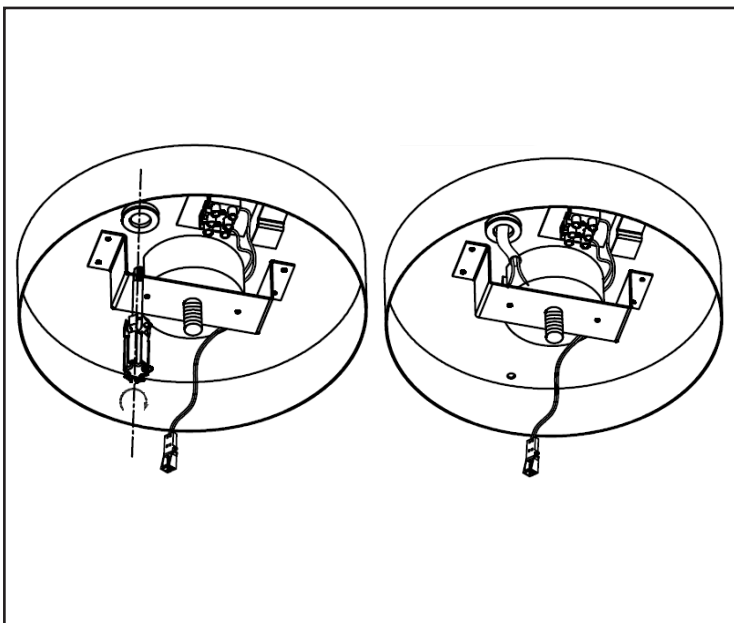




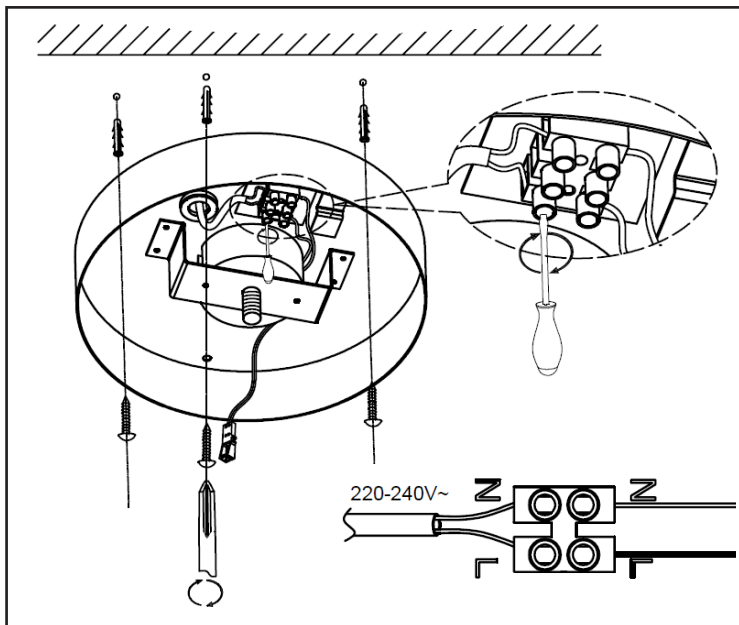
Mark out the drill centers and drill the fixing holes into the ceiling.



Unscrew the center retaining nut and separate the light fitting from the ceiling mounting box.

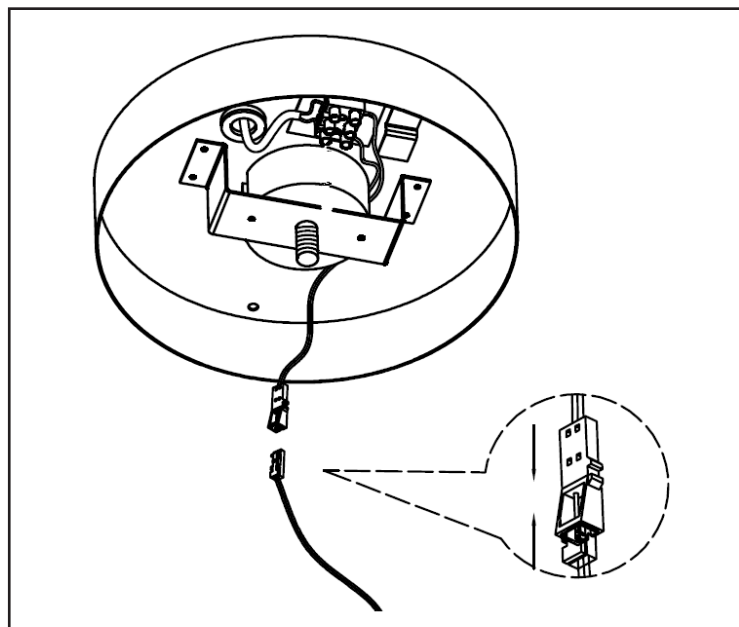


Use a screw driver to puncture a hole in the ceiling box as shown, then feed through the power cable.



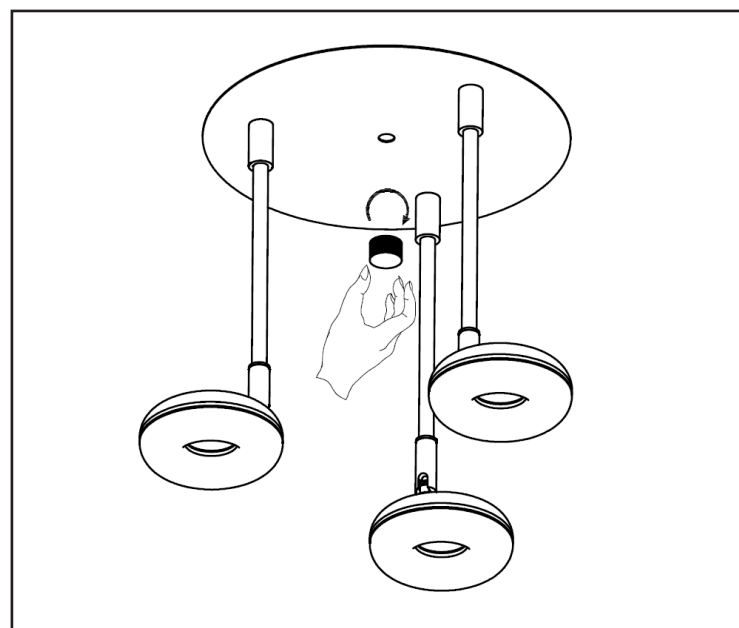
Fasten the ceiling box in place on the ceiling.

Connect the power supply to the connection block as shown in the image.



Connect the Driver cable to the cable on the LED fitting.

Offer the LED fitting up to the ceiling box.



Secure the retaining nut back in place.

Turn the power back on, the unit is ready to use.

# Warranty Information

---

- *This product is covered by the standard indoor Biard 5 limited year warranty for any manufacturing faults.*
- *The warranty starts from the date of purchase.*
- *The warranty period is based on a burning behaviour of max. 4000 hours/year. In case of more than 4000 hours/year, the warranty period will be adjusted pro-rata.*
- *Labour costs for installation of the Product are not covered under this warranty.*
- *The warranty is only valid when products are properly installed and operated as specified in this manual and the data sheets.*
- *All warranty queries should be through the stockist that the product was purchased through.*

# Recycling & Disposal

---

**The Waste Electrical and Electronic Equipment Directive (WEEE Directive)** is the **European Community directive** 2012/19/EU on **Waste Electrical and Electronic Equipment (WEEE)** which, together with the **RoHS Directive** 2002/95/EC, became European Law in February 2003

The **WEEE** directive aims to reduce the amount of electrical equipment being produced and to encourage everyone to reuse, recycle and recover it.

In support of these guidelines and for environmental safety, do not dispose of any electrical equipment including those marked with the below symbols

When replacing old electrical devices with new ones the retailer is legally obligated to take back your old items for disposal free of charge. You can also recycle your old electrical devices free of charge at your local recycling centre. Please contact your local council for more information.



Consult instructions for use